

**ISO 9:2:2 v2X**  
**UNRELENTING ENERGY<sup>†</sup>**  
**MULTI-PHASE 9:2:2 RATIO BCAA**



The PERFORMIX™ v2X Difference  
**UNRELENTING ENERGY**

**Performix™ ISO 9:2:2 v2X** takes our advanced BCAA formula to the next level. This is a triple-threat with a surge of energy that complements your recovery and hydration.<sup>†</sup>

**Unrelenting Energy<sup>†</sup>**

For the ultimate pre and intra workout boost, **ISO 9:2:2 v2X** injects 150mg of caffeine and PeakO<sub>2</sub>® into our proven BCAA blend to power your performance.<sup>†</sup>

**Increased Power and Endurance in just 7 days<sup>†</sup>**

Redefine your peak strength. **ISO 9:2:2 v2X** is formulated with a synergistic mix anchored by PeakO<sub>2</sub>® to increase workout duration, maximum power output and exercise capacity.<sup>†</sup>

**Hydration and Recovery<sup>†</sup>**

Time-Released to refuel and rejuvenate, **ISO 9:2:2 v2X** will supercharge your recovery so you will be in your prime for the next workout. This formula is designed to keep you thoroughly hydrated with added coconut water.<sup>†</sup>

**Label and Formula Transparency**

**ISO 9:2:2 v2X** contains transparent formulation that are designed for maximum efficacy.

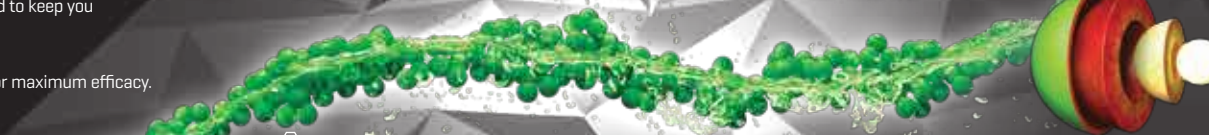


<sup>†</sup>These statements have not been evaluated by the Food and Drug Administration. This product is not intended to diagnose, treat, cure or prevent any disease.

<sup>†</sup>Based on two servings per day. In the first seven days of a 21-day clinical study at the University of North Carolina, competitive athletes supplementing with four grams per day of PeakO<sub>2</sub> improved their Peak Power Output 17.6% over baseline. The placebo group decreased 11.8% compared to baseline. The PeakO<sub>2</sub> group improved its collective time to exhaustion by 70 seconds, compared to a mere 5-second reduction by the placebo group.

**Increased Power and Endurance<sup>††</sup>**  
**Hydration and Recovery<sup>†</sup>**  
**Clinically Dosed Transparent Labeling**

**PERFORMIX™**



**ADVANCED MULTI-PHASE EXTENDED RELEASE<sup>†</sup>**

**PERFORMIX TERRA POD MULTI-COATING MATRIX**  
**DISPERSION COATING** Intelligent rate control polymer designed for extended release ingredient profile.<sup>†</sup>  
**HYDROPHILIC COAT** Intelligent carrier control pore former within the dispersion coat provides delayed release functionality.<sup>†</sup>  
**TERRA TARGET INGREDIENTS**



**Cherry Lime Slush**  
 NATURALLY & ARTIFICIALLY FLAVORED

**30 SERVINGS**  
**DIETARY SUPPLEMENT**  
 NET WT. 15.3 OZ (435 G)

While some are content with being the best, you're never satisfied, because you know you can always be better. You need more energy to drive your determination. You need products that keep your pace. **PERFORMIX™ v2X** was created for those who see no limits in their quest for greatness, and who are willing to go the extreme in the pursuit of superior performance. Scientifically engineered with maximum levels of the highest quality premium ingredients, **PERFORMIX™ v2X** gives your body and mind the power to propel you into the realm of extraordinary achievement.<sup>†</sup>

PeakO<sub>2</sub>™ is protected by patents pending under exclusive global distribution by Compound Solutions, Inc.

**WARNING: DO NOT USE IF PREGNANT, NURSING, OR PLAN ON BECOMING PREGNANT. THIS PRODUCT IS INTENDED FOR USE BY HEALTHY ADULTS OVER THE AGE OF 18 AND SHOULD BE AVOIDED BY THOSE SENSITIVE TO CAFFEINE OR OTHER INGREDIENTS THAT HAVE KNOWN STIMULANT EFFECTS. Contains caffeine.** Do not use this product continuously for more than 8 weeks. Do not combine with alcohol. Not intended for use by those with a medical condition. Use only as directed. Do not exceed recommended daily intake. Do not consume synephrine or caffeine from other sources, including, but not limited to, coffee, tea, soda and other dietary supplements or medications containing phenylephrine or caffeine. Consult a physician or licensed qualified health care professional prior to use if you are pregnant or nursing, or if you are taking medication, including, but not limited to, MAO inhibitors, antidepressants, aspirin, nonsteroidal anti-inflammatory drugs or products containing phenylephrine, ephedrine, pseudoephedrine, or other stimulants, or if you have a medical condition, including, but not limited to, heart, liver, kidney, or thyroid disease, psychiatric or epileptic disorders, difficulty urinating, diabetes, high blood pressure, cardiac arrhythmia, recurrent headaches, enlarged prostate or glaucoma. Discontinue 2 weeks prior to surgery or if you experience rapid heartbeat, dizziness, severe headache or shortness of breath. **DO NOT USE IF SAFETY SEAL UNDER CAP IS BROKEN. KEEP OUT OF REACH OF CHILDREN.**



**SUGGESTED USE:** As a dietary supplement, adults mix 1 serving (1scoop) with 8 ounces of cold water 20-30 minutes prior to workout. Do not exceed two (2) scoops per day. This product should not be taken in combination with other products containing caffeine or other stimulants. Do not take within four (4) hours of bedtime. Prior to each use, shake container vigorously to ensure evenly dispersed beads. **Please read the entire label before use.**

<b>Supplement Facts</b>	
Serving Size 1 Scoop (14.5g)	
Servings Per Container 30	
Amount Per Serving	% Daily Value
Calories	15
Total Carbohydrate	2 g 1%
Sodium (as disodium phosphate)	240 mg 10%
Potassium (as dipotassium phosphate)	225 mg 5%
ISO 9:2:2 BCAA Blend	
Utilizing Performix™ Terra Intelligent Dosing™ Beadlets	5,000 mg **
Leucine	3,460 mg **
Isoleucine	770 mg **
Valine	770 mg **
Caffeine	150 mg **
PeakO <sub>2</sub> Performance Blend (Cordyceps (Cordyceps militaris), Reishi (Ganoderma lucidum), King Trumpet (Pleurotus eryngii), Shiitake (Lentinula edodes), Lion's Mane (Hericium erinaceus), Turkey Tail (Trametes versicolor))	2,000 mg **
L-Citrulline Malate 2:1	1,000 mg **
Betaine Anhydrous	1,250 mg **
Coconut Water Powder	500 mg **

\* Percent Daily Values are based on a 2,000 calorie diet.  
 \*\* Daily Value not established.

**OTHER INGREDIENTS:** alic Acid, Citric Acid, Disodium Phosphate, Dipotassium Phosphate, Natural and Artificial Flavor, Sucralose, Fractionated Palm Oil Powder, Calcium Silicate, Silicon Dioxide, Microcrystalline Cellulose, Acesulfame Potassium, Salt, Ethylcellulose, Hydroxypropyl Methylcellulose (HPMC), FD&C Red #3, FD&C Red #40, FD&C Yellow #5, FD&C Blue #1.

**CONTAINS:** Milk, Tree Nuts (Coconut). This product was produced in a facility that may also process ingredients containing milk, eggs, fish, crustacean shellfish, tree nuts, peanuts, wheat and soybeans. Distributed by: Performix LLC, 221 S. Cherokee St. Denver, CO 80223. [www.performixdriven.com](http://www.performixdriven.com)

