

SUGGESTED INTAKE: 1 CAPSULE 2 TIMES DAILY COATING FOR MULTIPLE RELEASE POINTS

TERRA 1: Introduction Phase

Thermogenesis is stimulated, yielding increased heat and ATP production and energy expenditure from a rise in Basal Metabolic Rate (BMR). Key phytonutrients, Sensoril® and Huperzine A, coupled with caffeine, provide ballistic energy, mental acuity and focus.†

TERRA 2: Chill Phase

During this phase, a "chilling effect" occurs, which is indicative of an increase in body temperature due to peripheral heat transfer. Thermogenesis and BMR are sustained by the slow, predictable release of precision nutrients Yohimbine HCl and L-DOPA. Advantra Z® (bitter orange) is also released to stimulate beta-cell lipolysis and the breakdown of fats.†

TERRA 3: Sustain and Block Phase

As the body continues to absorb key nutrients, Terra 3 begins to dissolve anti-adaptive nutrients which are intended to trick the body into maintaining its elevated fat burning BMR.†

TERRA 4: Transition Phase

As the body utilizes all key actives in the last phase, a large 1,000 mcg dosage of B-12 releases, supporting the body's natural mental and physical energy production.†

Bio-Available Carrier Oil

Medium Chain Triglycerides passively diffuse from the GI tract to the portal system; this is done without requirement for modification unlike long-chain fatty acids. Therefore, utilization of these oils as a carrier allows for quicker absorption of energy potentiating nutrients. CLA aids in the "fat to energy" exchange in the mitochondria.†

POWERED BY:



WARNING: DO NOT USE IF PREGNANT, NURSING, OR PLAN ON BECOMING PREGNANT. THIS PRODUCT IS INTENDED FOR USE BY HEALTHY ADULTS OVER THE AGE OF 18 AND SHOULD BE AVOIDED BY THOSE SENSITIVE TO CAFFEINE OR OTHER INGREDIENTS THAT HAVE KNOWN STIMULANT EFFECTS. Contains caffeine. Do not use this product continuously for more than 8 weeks. Do not combine with alcohol. Not intended for use by those with a medical condition. Use only as directed. Do not exceed recommended daily intake. Do not consume synephrine or caffeine from other sources, including but not limited to, coffee, tea, soda and other dietary supplements or medications containing phenylephrine or caffeine. Consult a physician or licensed qualified health care professional prior to use if you are pregnant or nursing, or if you are taking medication, including but not limited to MAOI inhibitors, antidepressants, aspirin, nonsteroidal anti-inflammatory drugs or products containing phylephrine, ephedrine, pseudoephedrine, or other stimulants, or if you have a medical condition, including but not limited to, heart, liver, kidney, or thyroid disease, psychiatric or epileptic disorders, difficulty urinating, diabetes, high blood pressure, cardiac arrhythmia, recurrent headaches, enlarged prostate or glaucoma. Discontinue 2 weeks prior to surgery or if you experience rapid heart beat, dizziness, severe headache or shortness of breath.

DO NOT USE IF SAFETY SEAL UNDER CAP IS BROKEN. KEEP OUT OF REACH OF CHILDREN.

† These statements have not been evaluated by the Food and Drug Administration. This product is not intended to diagnose, treat, cure, or prevent any disease.

PERFORMIX™

SST GLOW

FEMALE BEAUTY THERMOGENIC^{1A}



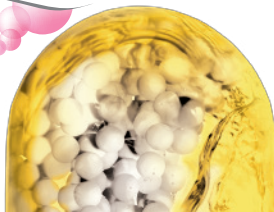
BALLISTIC BODY ENERGY^{1A}

FAT METABOLISM^{1A}

ENHANCED MENTAL FOCUS¹

+HEALTHY SKIN HYDRATION

Lipowheat
PHYTOCERAMIDES



60 LIQUID CAPSULES

DIETARY SUPPLEMENT

SUGGESTED USE: As a dietary supplement, adults take 1 serving (2 capsules) each day in the morning. Do not take more than 2 capsules daily. This product should not be taken in combination with other products containing caffeine or other stimulants. Do not take within six hours of bedtime. Please read entire label before use.

Supplement Facts

Serving Size 2 Capsules

Servings Per Container 30

Amount Per Serving		% Daily Value
Vitamin D-3 (as cholecalciferol)	2,000 IU	500%
Niacin	8.5 mg	40%
Vitamin B-12 (as Methylcobalamin)	850 mcg	14,170%

Performix™ Susper Super Beauty Complex 1,210 mg †

TERRA Pod Ballistic Energy Complex

Caffeine Anhydrous (170 mg), Sensoril™ Ashwagandha (*Withania somnifera*) extract (root/leaf) (std. to 8% Withanolides and 32% Oligosaccharides), Advantra Z™ Bitter Orange (*Citrus aurantium*) extract (fruit) (supplying synephrine, n-methyltyramine, hordenine, tyramine, and octopamine), Synephrine HCl, Huperzine A 1% (*Huperzia serrata*) extract (aerial parts), Yohimbine HCl, *Mucuna pruriens* extract (seeds) (std. to 40% L-DOPA), Bioperine™ Black Pepper (*Piper nigrum*) extract (fruit) (std. to 95% Piperine)

Lipo Beautifying Skin Complex

Medium Chain Triglycerides, Lipowheat® wheat (*Triticum vulgare*) Oil Extract (Supplying Glycolipids, Phytoceramides, and Glycosylceramides) (350 mg), Safflower (*Carthamus tinctorius* L) extract (seed) (std. to 78% Conjugated Linoleic Acid (CLA)), Evening Primrose (*Oenothera biennis*) Oil (std. to 10% gamma-Linolenic Acid (GLA)(Omega-6))

† Percent Daily Values (DV) are based on a 2,000 calorie diet. **Daily Value not established.

OTHER INGREDIENTS: Gelatin (Capsule), Sucrose, Starch, Silica, Povidone, Titanium Dioxide, Magnesium Stearate

CONTAINS: Wheat.

†Key ingredients in this formula help promote thermogenesis, boost energy levels and stimulate calorie burning. This product is to be used in conjunction with a calorie-reduced diet and regular exercise program. The degree of improvement varies by individual and is related to your diet, exercise, daily activities, age and body frame.

Store in a cool (60-80°F), dry place. Please recycle ♻️
Sensoril® is protected under U.S. Patent 6,713,092 and is a registered trademark of Natreon, Inc.
BioPerine® is a registered trademark of Sabinsa Corp.
Lipowheat® is a trademark of Arco, Robertet Group, France.

Lipowheat
PHYTOCERAMIDES

MADE IN THE USA Proudly made in the USA with carefully selected ingredients of international and domestic origin.

www.performixdriven.com

Distributed by: Performix LLC,
221 S. Cherokee St. Denver, CO 80223



ITEM 132-F



11274-02119 2

∞