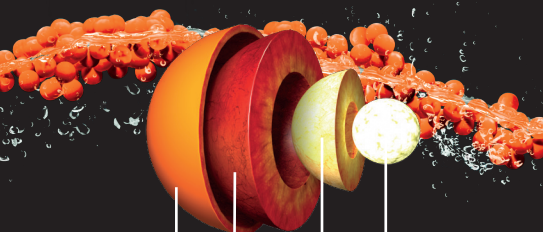


PERFORMIX™

PERFORMIX ION embodies the PERFORMIX promise. ION uses the most advanced Multi-Phase Bead nutrient delivery system, precision engineered with ballistic Terra Intelligent Beads to disperse hard hitting ingredients in stages throughout your workout. Unlike any other pre-workout, ION releases a 2nd wave during your workout with a flood of additional anti-catabolic and metabolic energy stimulants to push you through. This innovative multi-phase system is designed to get you started, keep you going and finish strong when all others fail.†*

ADVANCED MULTI-PHASE EXTENDED RELEASE†



PERFORMIX TERRA BEAD MULTI-COATING MATRIX

TERRA TARGET INGREDIENTS

DISPERSION COATING
Intelligent rate control polymer designed for extended release ingredient profile.

HYDROPHILIC COAT
Intelligent carrier control pore former within the dispersion coat provides delayed release functionality.



PERFORMIX™

ION

MULTI-PHASE PRE-WORKOUT

TERRA INTELLIGENT BEADS



MAXIMUM PUMP TECHNOLOGY†
BALLISTIC MUSCLE ENERGY†
ENHANCED MENTAL FOCUS†

NATURALLY & ARTIFICIALLY FLAVORED

WATERMELON

TRUE 20 SERV

DIETARY SUPPLEMENT

NET WT. 3.74 OZ (106g)

Every PERFORMIX supplement is driven by our TERRA Intelligent Dosing™ technology, utilizing best in class bioavailability enhancers and intelligent delivery to help maximize every single molecule's potential... period.† To out perform, out last and out do.*

WARNING: DO NOT USE IF PREGNANT, NURSING, OR PLAN ON BECOMING PREGNANT. THIS PRODUCT IS INTENDED FOR USE BY HEALTHY ADULTS OVER THE AGE OF 18 AND SHOULD BE AVOIDED BY THOSE SENSITIVE TO CAFFEINE OR OTHER INGREDIENTS THAT HAVE KNOWN STIMULANT EFFECTS. CONTAINS 175MG OF CAFFEINE PER SERVING. Do not use this product continuously for more than 8 weeks. Do not combine with alcohol. Not intended for use by those with a medical condition. Use only as directed. Do not exceed recommended daily intake. Do not consume synephrine or caffeine from other sources including, but not limited to, coffee, tea, soda, and other dietary supplements or medications containing phenylephrine or caffeine. Consult a physician or licensed qualified health care professional prior to use if you are pregnant or nursing, or if you are taking medication including, but not limited to, MAOI inhibitors, antidepressants, aspirin, nonsteroidal anti-inflammatory drugs or products containing phenylephrine, ephedrine, pseudoephedrine, or other stimulants, or if you have a medical condition including, but not limited to, heart, liver, kidney, or thyroid disease, psychiatric or epileptic disorders, enlarged prostate or glaucoma. Discontinue 2 weeks prior to surgery or if you experience rapid heart beat, dizziness, severe headache or shortness of breath. DO NOT USE IF SAFETY SEAL UNDER CAP IS BROKEN. KEEP OUT OF THE REACH OF CHILDREN.

Store in a cool (60-80°F), dry place. Please recycle. ♻️

Powered by CarnoSyn® trademark and patents owned by Natural Alternatives International, Inc., www.carnosyn.com
Advantra Z® is a registered trademark of Nutratech, Inc.
BioPerine® is a registered trademark of Sabinsa Corporation

MADE IN THE USA Proudly made in the USA with carefully selected ingredients of international and domestic origin.

www.performixdriven.com
Distributed by: Performix LLC, 221 S. Cherokee St. Denver CO 80223

*When used in combination with a healthy diet and resistance exercise regime.

† These statements have not been evaluated by the Food and Drug Administration. This product is not intended to diagnose, treat, cure, or prevent any disease.



SUGGESTED USE: As a dietary supplement, adults mix each serving (1 scoop) with 4-6 oz of water 20-30 minutes prior to workout. Do not exceed two (2) scoops per day. This product should not be taken in combination with other products containing caffeine or other stimulants. **Some individuals may experience a harmless tingling and skin flush which are attributed to the beta alanine and niacin in this product. Do not take within six hours of bedtime. Prior to each use, shake container vigorously to ensure evenly dispersed beads. Please read the entire label before use.**

Supplement Facts

Serving Size 1 scoop (5.3g)
Servings Per Container 20

Amount Per Serving	% Daily Value	
Niacin (as Nicotinic Acid and Niacinamide)	30 mg	150%
Vitamin B12 (as Methylcobalamin)	500 mcg	8,330%
Calcium (as Calcium Silicate)	72 mg	6%
Performix™ ION Preworkout Complex†	3,714 mg	**

with exclusive Performix Terra Intelligent Dosing™ beadlets

Sustained Muscular Performance Blend and Ballistic Energy Matrix†

Carnosyn® Beta Alanine, Citrulline Malate 2:1, Betaine Anhydrous, Creatine HCl, N-Acetyl L-Tyrosine, Advantra Z® Bitter Orange (*Citrus aurantium*) Extract (fruit) [supplying synephrine, n-methyltyramine, hordenine, tyramine and octopamine], Bioperine® Black Pepper (*Piper nigrum*) Extract (fruit)[std. to 95% Piperine], Rauwolfscine (*Rauwolfia canescens*) Extract (bark)[std. to 90% Alpha Yohimbine HCl]

Caffeine	175 mg	**
----------	--------	----

* Percent Daily Values are based on a 2,000 calorie diet.

** Daily Value not established.

OTHER INGREDIENTS: Calcium Silicate, Hydrogenated Vegetable Oil, Natural & Artificial Flavors, Sucralose, Citric Acid, Microcrystalline Cellulose, Acesulfame Potassium, Hydroxypropyl Methylcellulose (HPMC), Silica, Ethylcellulose FD&C Yellow #6, FD&C Red Dye #40.

This product was produced in a facility that may also process ingredients containing milk, eggs, fish, crustacean shellfish, tree nuts, peanuts, wheat and soybeans.