

USAGE: Take 2 softgels per day or as directed by your qualified healthcare professional.

NOTE: If you have a medical condition, are pregnant, lactating, trying to conceive, under the age of 18, or taking medications, consult your healthcare professional before using this product.

Saw Palmetto (*Serenoa repens*) berry extract is standardized to contain 85-95% as active fatty acids and sterols, including *beta*-sitosterol, which support prostate health.*

Jarrow Formulas® Saw Palmetto is a supercritical CO₂ extract. The supercritical CO₂ process yields higher concentrations of biologically active free fatty acids than ethanolic (alcohol) extracts.

Jarrow Formulas® Saw Palmetto Extract is in a base of **Pumpkin Seed Oil** and fortified with **phytosterols**.

This product complies with European and proposed USP Monographs for Saw Palmetto.

Keep out of the reach of children.
Store in a cool, dry place.

* These statements have not been evaluated by the Food and Drug Administration. This product is not intended to diagnose, treat, cure or prevent any disease.

Lot #. Best Used Before:

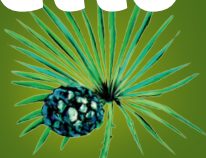
Jarrow
FORMULAS®

Saw Palmetto

160 mg Standardized
Saw Palmetto Extract
Per Softgel

Supports Prostate Health*

120
SOFTGELS
DIETARY
SUPPLEMENT



Supplement Facts

Serving Size 2 Softgels
Servings Per Container 60

	Amount Per Serving	% DV
Saw Palmetto Berry Extract (<i>Serenoa repens</i>) (85-95% Fatty Acids and Sterols)	320 mg	†
Phytosterols (VegaPure®) (40 mg <i>beta</i> -Sitosterol)	100 mg	†

† Daily Value not established.

Other Ingredients: Pumpkin seed oil and natural mixed tocopherols (added to maintain freshness). Softgel consists of bovine gelatin, glycerin, purified water and annatto (added as a light barrier). No wheat, gluten, soybeans, dairy, egg, fish/shellfish, or peanuts/tree nuts.

02319SAW120 PROD # 114051

Distributed Exclusively by:

Jarrow FORMULAS®

Superior Nutrition and FormulationSM

P.O. Box 35994

Los Angeles, CA 90035-4317

www.Jarrow.com



© 2019 Jarrow FORMULAS®