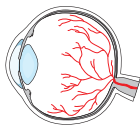


Benefits of Ginkgold® Eyes

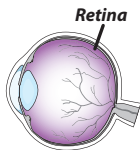
Healthy Blood Flow

- Supports healthy capillaries (tiny blood vessels) and micro-circulation*



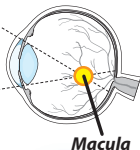
Optimal Night Vision

- Supports the retina's ability to adapt to light and dark conditions*



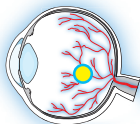
Macular Support

- Provides carotenoids (lutein & zeaxanthin) that are critical to a healthy macula



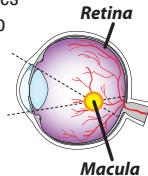
Antioxidant Protection

- Helps protect against free radicals and oxidative stress*



Retina & Macula Health

The **retina** in the eye “sees” light and transforms it into nerve impulses that the brain interprets as vision. Maintaining healthy blood vessels and blood flow is the key to proper retinal function.



The **macula** is the central part of the retina where light is focused. Carotenoids (lutein and zeaxanthin) found in the macula are critical to protecting the retina from ultraviolet (UV) light and free radicals.

Advanced Ginkgo Extract

- Made from premium Ginkgo leaves
- Standardized to 24% Ginkgo flavone glycosides and 6% terpene lactones
- Over 20 active and coactive constituents



Nature's Way
Ginkgold®
 Advanced Ginkgo Extract **EYES**



for **VISUAL FUNCTION***

LUTEIN 20MG

Ginkgo • Bilberry • Zeaxanthin

60 TABLETS • DIETARY SUPPLEMENT

*This statement has not been evaluated by the Food & Drug Administration. This product is not intended to diagnose, treat, cure or prevent any disease.

Recommendation: Take 2 tablets daily with water at mealtimes. May be used in conjunction with up to 180 mg of Ginkgold® Ginkgo biloba extract. If pregnant, nursing or taking any medications, consult a healthcare professional before use.

Supplement Facts

Serving Size 2 Tablets / Servings per Container 30

Amount Per Serving		% DV
Total Carbohydrate	<1 g	<1%†
Dietary Fiber	1 g	4%†
Bilberry, dried extract (berry) standardized to 25% anthocyanins (30 mg)	120 mg	**
Ginkgold® Ginkgo biloba extract (leaf) standardized to 24% Ginkgo flavone (14.4 mg) glycosides and 6% terpene lactones (3.6 mg)	60 mg	**
Lutein Carotenoid from Marigold extract (flower)	20 mg	**
Zeaxanthin Carotenoid from Marigold extract (flower)	1 mg	**

†Percent Daily Values (DV) are based on a 2,000 calorie diet. **Daily Value not established.

Other ingredients: cellulose, modified cellulose, modified cellulose gum, stearic acid, silica, titanium dioxide color, bilberry fruit color, wax (coating)

©2015 Nature's Way Brands, LLC
 Green Bay, WI 54311 USA
 Questions? 1-800-9NATURE
 or naturesway.com



Keep out of reach of children. Safety sealed with printed outer shrinkwrap and inner seal under bottle cap. Do not use if either seal is broken or missing. Keep bottle tightly closed.

*This statement has not been evaluated by the Food & Drug Administration. This product is not intended to diagnose, treat, cure or prevent any disease.