

DAYS
1-2
CLEANSE
DIRECTIONS: Shake well before serving. For use on days 1 and 2. Mix 4 fl. oz. of Liquid Cleanse with 4 fl. oz. cold water; drink slowly once daily.

LIQUID CLEANSE

Nutrition Facts

Serving Size 4 Fl. Oz. (118 mL)

Amount Per Serving

Calories 65
Calories From Fat 0

Amount Per Serving

Vitamin A	20%	•	Vitamin C	0%
Calcium	0%	•	Iron	0%

† Percent Daily Values are based on a 2,000 calorie diet. Your daily values may be higher or lower depending on your calorie needs:
 * Percent Daily Value not established.

Calories:	2,000	2,500
-----------	-------	-------

Total Fat	Less than 65g	80g
Salt Fat	Less than 20g	25g
Cholesterol	Less than 300mg	300mg
Sodium	Less than 2,400mg	2,400mg
Potassium	3,500mg	3,500mg
Total Carbohydrate	300g	375g
Dietary Fiber	25g	30g

INGREDIENTS: Purified Water, Fructose, Fiber Blend (Digestion Resistant Maltodextrin, Oat Fiber, Soybean Fiber, Brown Rice), Fruit and Vegetables Blend (Pure Lemon Juice Concentrate, Coconut, Pomegranate Fruit Extract, Raspberry Juice Crystals, Bilberry Fruit Extract, Blueberry Fruit Extract, Elderberry Fruit Extract, Cherry Juice Crystals, Blackberry Fruit Extract, Cranberry Fruit Extract, Acerola Berry Extract, Cranberry Concentrate, Cleansing Blend (Aloe Vera Gel, Chlorella Algae, Japanese Seaweed Blend (Kombu, Wakame, Nori), Chicory Root, Jerusalem Artichoke Tuber, Licorice Root Extract, Astragalus Root, Barley Malt, Mung Bean, Soy Sprouts, Wheat Bran, Eleuthero Root Extract, Barley Grass, Jasmine Tea Extract, Natural Lemonade Flavor, beta-Carotene (Color).

CONTAINS: Milk, Soybeans, Tree Nuts (Coconuts) and Wheat.

DAYS
3-7
DETOX
DIRECTIONS: As a dietary supplement, take the contents of one Herbal Cleansing Pack on days 3 - 7.

BLOOD CIRCULATION

Supplement Facts

Serving Size Two Red Capsules

Amount Per Serving

Sarsaparilla Root Powder (<i>Smilax aristolochifolia</i>)	350 mg*
Butcher's Broom Root Powder (<i>Ruscus aculeatus</i>)	200 mg*
Cayenne Pepper Fruit Powder (Capsicum spp.)	50 mg*
Green Tea Leaf Extract (<i>Camellia sinensis</i>)	30 mg*
Grape Seed Extract (<i>Vitis vinifera</i>)	25 mg*

* Daily Value not established.

OTHER INGREDIENTS: Gelatin, Microcrystalline Cellulose, Hydroxypropylcellulose, Stearic Acid Vegetable Source, Silicon Dioxide, Magnesium Stearate Vegetable Source, Carmine Color.

Conforms to USP <2091> for weight. Meets USP <2040> disintegration.

ACTUAL SIZE

LIVER CLEANSER

Supplement Facts

Serving Size Two Green Capsules

Amount Per Serving

Picrorhiza Root Extract (<i>Picrorhiza kurroa</i>)	400 mg*
(5% Picnoides = 20 mg)	
Milk Thistle Seed Extract (<i>Silybum marianum</i>)	256 mg*
(50% Silymarin = 128 mg)	
Turmeric Root Extract (<i>Curcuma longa</i>)	105.3 mg*
(95% Curcumin = 100 mg)	
Betaine (as Betaine Hydrochloride)	75 mg*
N-Acetyl-L-Cysteine	50 mg*
Dandelion Root Powder (<i>Taraxacum officinale</i>)	16.67 mg*
Barberry Root Bark Powder (<i>Berberis vulgaris</i>)	16.67 mg*
Burdock Root Powder (<i>Arctium lappa</i>)	16.67 mg*
alpha-Lipoic Acid	10 mg*
L-Methionine	100 mcg*

* Daily Value not established.

OTHER INGREDIENTS: Microcrystalline Cellulose, Gelatin, Stearic Acid Vegetable Source, Maltodextrin, Silicon Dioxide, Magnesium Stearate Vegetable Source, Chlorophyllin (Color).

Conforms to USP <2091> for weight. Meets USP <2040> disintegration.

ACTUAL SIZE

DAYS
3-7
DETOX
DIRECTIONS: As a dietary supplement, on days 3 - 7 mix one packet with 4-6 fl. oz. of cold water or juice.

CLEANSING FIBER SACHET

Supplement Facts

Serving Size One Packet (7.7 g)

Amount Per Serving

Calories	25	% Daily Value
Total Carbohydrate	6 g	2%†
Dietary Fiber	5 g	20%†
Sugars	1 g	

† Percent Daily Values are based on a 2,000 calorie diet.

* Daily Value not established.

INGREDIENTS: Sunfiber® Partially Hydrolyzed Guar Gum, Polyethylene Glycol.

Sunfiber

Sunfiber® is a registered trademark of Taro International, Inc. Use of Sunfiber® is protected by US Trademark Registration No. 2,930,937.

KIDNEY HEALTH

Supplement Facts

Serving Size Two Tan Capsules

Amount Per Serving

Cranberry Fruit Concentrate (<i>Vaccinium macrocarpon</i>)	300 mg*
Parsley Leaf Powder (<i>Petroselinum crispum</i>)	100 mg*
Uva Ursi Leaf Extract (<i>Arctostaphylos uva-ursi</i>)	100 mg*
Goldenseal Root Extract (<i>Hydrastis canadensis</i>)	100 mg*
(5% Hydrastine = 5 mg)	
Juniper Berry Extract (<i>Juniperus communis</i>)	100 mg*
Yellow Dock Root Powder (<i>Rumex crispus</i>)	75 mg*
Dandelion Root Powder (<i>Taraxacum officinale</i>)	75 mg*
Ginger Root Extract (<i>Zingiber officinale</i>)	50 mg*
(5% Gingerols = 2.5 mg)	
Marshmallow Root Powder (<i>Althaea officinalis</i>)	50 mg*

* Daily Value not established.

OTHER INGREDIENTS: Gelatin, Microcrystalline Cellulose, Hydroxypropylcellulose, Stearic Acid Vegetable Source, Silicon Dioxide, Magnesium Stearate Vegetable Source, Carmel Color, Titanium Dioxide (Mineral Whitener).

Conforms to USP <2091> for weight. Meets USP <2040> disintegration.

ACTUAL SIZE

**DAYS
8 - 14
RESTORE**

DIRECTIONS: As a dietary supplement, take the contents of one Herbal Restore Pack on days 8 - 14.

GASTRO CLEANSER FORMULA

Supplement Facts

Serving Size Two White Capsules

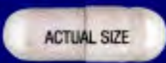
Amount Per Serving	
Fennel Seed Powder (<i>Foeniculum vulgare</i>)	250 mg *
Aribochoke Leaf Extract (<i>Cynara scolymus</i>) (2% Phenols = 2 mg)	100 mg **
Ginger Root Extract (<i>Zingiber officinale</i>) (5% Gingerols = 5 mg)	100 mg **
Fenugreek Seed Powder (<i>Trigonella foenum-graecum</i>)	100 mg **
Licorice Root Extract (<i>Glycyrrhiza glabra</i>)	70 mg *
Papaya Fruit Powder (<i>Carica papaya</i>)	50 mg *
Aloe vera Gel Extract	25 mg **
Peppermint Leaf Powder (<i>Mentha piperita</i>)	0.2 mg **

* Daily Value not established.

OTHER INGREDIENTS: Gelatin, Microcrystalline Cellulose, Stearic Acid Vegetable Source, Maltodextrin, Silicon Dioxide, Magnesium Stearate Vegetable Source, Titanium Dioxide (Mineral Whitener)

CONTAINS: Wheat.

Conforms to USP <2091> for weight. Meets USP <2040> disintegration.



TOTAL CLEANSER

Supplement Facts

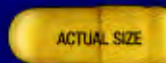
Serving Size Three Yellow Capsules

Amount Per Serving	
Garlic Bulb Powder (<i>Allium sativum</i>)	700 mg*
Clove Bud Powder (<i>Syzygium aromaticum</i>)	300 mg*
Pomegranate Fruit Extract (<i>Punica granatum</i>)	200 mg*
Fructooligosaccharides (FOS)	200 mg*
Turmeric Root Extract (<i>Curcuma longa</i>) (95% Curcumin = 150 mg)	157.9 mg*
Ginger Root Extract (<i>Zingiber officinale</i>) (5% Gingerols = 5 mg)	100 mg*
Chamomile Flower Powder (<i>Matricaria recutita</i>)	75 mg*
Licorice Root Powder (<i>Glycyrrhiza glabra</i>)	35 mg*
Amli Fruit Extract (<i>Embilica officinalis</i>)	25 mg*
Acai Berry Extract (<i>Euterpe oleracea</i>)	25 mg*

* Daily Value not established.

OTHER INGREDIENTS: Gelatin, Stearic Acid Vegetable Source, Silicon Dioxide, Magnesium Stearate Vegetable Source, Titanium Dioxide (Mineral Whitener), Riboflavin (Color).

Conforms to USP <2091> for weight. Meets USP <2040> disintegration.



OUR QUALITY COMMITMENT TO YOU

Since 1935, our mission as the industry leader has been to provide you with the highest-quality nutritional supplements. We continue to stand behind this mission. If you're not 100% satisfied with your purchase, return the unused portion of the product with your receipt within 30 days and we'll either refund your money or find a replacement product that is right for you.

WARNING: Consult your physician prior to using this product if you are pregnant, nursing, taking medication, or have a medical condition. Discontinue use two weeks prior to surgery. This product contains EGCG from green tea.

No Artificial Flavors.

KEEP OUT OF REACH OF CHILDREN.

Store in a cool dry place.

For more information:

1-888-462-2548

SHOP NOW @ GNC.COM

Distributed by:
General Nutrition Corporation
Pittsburgh, PA 15222 USA



Please recycle this box.

**DAYS
8 - 14
RESTORE**

DIRECTIONS: As a dietary supplement, take one capsule daily on days 8 - 14.

PROBIOTIC 12.5 BILLION

Supplement Facts

Serving Size One Capsule

Amount Per Serving	
LAB4 Probiotics	12.5 Billion Active Cultures*
<i>Lactobacillus acidophilus</i> (CUL 60)	
<i>Lactobacillus acidophilus</i> (CUL 21)	
<i>Bifidobacterium bifidum</i> (CUL 20)	
<i>Bifidobacterium lactis</i> (CUL 34)	

* Daily Value not established.

OTHER INGREDIENTS: Gelatin, Cellulose, Silica, Magnesium Stearate, Titanium Dioxide (Mineral Whitener).

