

**DIRECTIONS:** (Adult) Take two (2) tablets twice daily with meals and a full glass (8 oz.) of water, preferably at breakfast and lunch. If caffeine keeps you up at night, do not take this product in the evening since it contains natural caffeine.

## Supplement Facts

Serving Size: 2 Tablets  
Servings per Container: 24

	Amount per Serving	%Daily Value
Sinetrol® - Xpur (blend of Grapefruit ( <i>Citrus paradisi</i> L.)(fruit), Guarana ( <i>Paullinia cupana Kunth</i> ) (seed) and Orange ( <i>Citrus sinensis</i> L. <i>Osbeck</i> )(fruit) extracts)	450 mg	†

†Daily Value not established

Other Ingredients: Microcrystalline cellulose, dicalcium phosphate dihydrate, croscarmellose sodium, silicon dioxide, magnesium stearate, sodium carboxymethylcellulose, dextrose, soy lecithin, sodium citrate and dextrin.

### Contains: Soy

**Sinetrol®** is a registered trademark of Fytexia

**Usage Warnings:** Do not use if safety seal is broken. This product contains natural caffeine and may affect blood pressure and/or heart conditions. Check with your doctor before using this product if you are using medication or have any medical conditions, including heart disease and/or high blood pressure. It is recommended to limit additional caffeine intake while taking this product. Do not use if you may become pregnant, are pregnant or nursing. Do not exceed recommended daily intake. Not intended for use by persons under 18. **KEEP OUT OF REACH OF CHILDREN.** Store in a cool, dry place.

**WARNING:** (State of California Prop 65) This product contains a chemical known to the State of California to cause birth defects or other reproductive harm.

DISTRIBUTED, FORMULATED and QUALITY TESTED by:  
**Applied Nutrition®** P.O. Box 66457  
Los Angeles, CA 90066

Actual  
Size

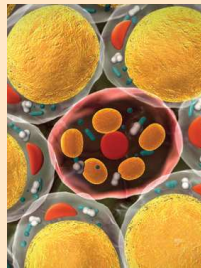
‡ In a clinical study, Sinetrol® showed a greater reduction in circumference in the waist and hips as compared to placebo. Other areas were not specifically measured.



Applied Nutrition® is committed to developing science-based products that exceed the highest standards for quality and purity. As a leader in innovation, we continuously strive to bring forward new ideas and groundbreaking formulas that enhance health and well-being. To view our entire line of products, please visit us online at:

[www.AppliedNutrition.com](http://www.AppliedNutrition.com)

## Discover the Power of Sinetrol® and its Ability to Metabolize Stored Fat in the Body!\*



**Stored-Fat Citrus Metabolizer™** is a unique weight management product designed to help breakdown stored fat in the body.\* This powerful formula features

Sinetrol®. Preliminary clinical research with Sinetrol® demonstrates its ability to metabolize stored fat in the body.\*

When used with a sensible diet and exercise plan‡, this product can help you lose weight.\* Try **Stored-Fat Citrus Metabolizer™** today and put yourself on the path to a happier you!\*

‡ Diet & Exercise Plan available online at:  
[www.AppliedNutrition.com/deplan](http://www.AppliedNutrition.com/deplan)

QUESTIONS: Contact Consumer Affairs  
**1-800-297-3273** Weekdays 8:00 AM to 5:00 PM (PST)  
[Questions@AppliedNutrition.com](mailto:Questions@AppliedNutrition.com)



CLINICALLY RESEARCHED

# STORED-FAT CITRUS METABOLIZER™

Powerful Sinetrol® Helps Breakdown Stored Fat in the Belly, Waist and Hips\*\*

48 TABLETS • DIETARY SUPPLEMENT

## Discover the Power of Sinetrol® The Breakthrough Ingredient!\*



At the heart of this unique weight management product is Sinetrol®.\* A powerful extract that has been clinically researched for its ability to metabolize stored

fat in the body, including stubborn areas, such as the belly, waist and hips.\*

It works by stimulating Lipolysis, a catabolic process leading to the breakdown of triglycerides stored in the fat cells (adipocytes), releasing free fatty acids (FFA).

Sinetrol® reduces body fat to help you reach and maintain a healthy body composition.\*

\*These statements have not been evaluated by the Food & Drug Administration. This product is not intended to diagnose, treat, cure or prevent any disease.