



Suggested Use: Add 1 scoop with 8 ounces of cold water or your favorite beverage to a shaker cup or blender and mix for 25-30 seconds. Vary the amount of liquid to meet your desired taste and consistency. Drink 1-3 servings daily as needed to satisfy your protein requirements. Using nonfat milk instead of water will give you a thicker, creamier shake.

100% WHEY PROTEIN CONCENTRATE - FOR 100% RESULTS!

Each serving contains 25 grams of complete protein derived solely from 100% Whey Protein Concentrate (WPC80). This supplement has NOT been amino or nitrogen spiked and contains only WPC80 with NO inferior whey concentrates like WPC34, WPC60, WPC75 or sweet whey. This does not contain maltodextrin, dextrose, dairy creamers or other fillers.

- NO PROPRIETARY BLENDS**
- NO HIDDEN INGREDIENTS**
- NO BANNED SUBSTANCES**
- NO FILLERS or EXCIPIENTS**
- LOW SUGAR & FAT**
- NO DEXTROSE/MALTODEXTRIN**
- NO INFERIOR WHEY CONCENTRATE LIKE WPC34, WPC60, WPC75 or SWEET WHEY**

HIGH CONCENTRATION OF BCAAs & AMINO ACIDS

Shown is the typical amino acid profile per serving which is derived from whey protein concentrate only. Absolutely no ingredients have been added to spike protein values.

Essential Amino Acids (EAAs)	Conditionally Essential Amino Acids (CAAs)	Nonessential Amino Acids (NAAs)
Tryptophan 893mg	Arginine 578mg	Aspartic Acid 2687mg
Valine** 1467mg	Cysteine 0mg	Serine 1103mg
Threonine 1667mg	Tyrosine 718mg	Glycine 433mg
Isoleucine** 1629mg	Histidine 468mg	Alanine 1230mg
Leucine** 2637mg	Proline 1574mg	
Lysine 2252mg	Glutamic Acid (Glutamine Precursor) 4381mg	
Phenylalanine 788mg		
Methionine 495mg		

TRU LABEL FULL LABEL DISCLOSURE

CELEBRATING 20 YEARS 1996-2016

NUTRABIO

GLUTEN & BSE/TSE FREE

CLASSIC WHEY

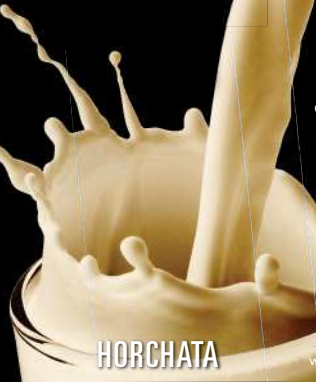
PURE WPC80 - TRIED & TRUE SINCE 1996

HIGH Biological Value | **SUPPORTS** Muscle Repair & Growth | **LOW** Sugar & Fat

5lb Natural & Artificial Flavoring Dietary Supplement Net Wt. 5 lb (2268 grams)

MADE IN OUR **GMP** & **FDA** INSPECTED FACILITY

25G PROTEIN
5.7G BCAAs



Supplement Facts

Serving size: 1 scoop (33.4 grams)
Servings per container: 67.9

Amount Per Serving	% Daily Value
Calories 130	
Calories from Fat 20	
Total Fat 2 g	3%*
Saturated Fat 1 g	6%*
Cholesterol 70 mg	23%*
Total Carbohydrate 2 g	<1%*
Sugars 1 g	†
Protein 25 g	50%*
Calcium 143 mg	14%*
Iron <1 mg	2%*
Phosphorus 101 mg	10%*
Magnesium 21 mg	5%*
Sodium 105 mg	4%*
Potassium 177 mg	5%*
Whey Protein Concentrate (non-denatured) 32.2g†	
<small>(32.2 grams WPC80 yielding 25 grams of complete protein)(CFM cross flow micro filtered. Cold processed.)</small>	
Flavoring 1.2 g	†
<small>(natural horchata flavor 750 mg, xanthan gum 270 mg, salt 110 mg, sucralose 80 mg)</small>	

* Percent Daily Values are based on a 2000 calorie diet.
† Daily Value not established.

OTHER INGREDIENTS: ABSOLUTELY NONE

Allergens: Milk and soy lecithin.

STORE IN COOL DRY PLACE. SERVING SCOOP INCLUDED (MAY SETTLE TO THE BOTTOM DURING SHIPPING.)

This product is intended as a dietary supplement only. Do not use as a sole source of nutrition.

†These statements have not been evaluated by the Food and Drug Administration. This product is not intended to diagnose, treat, cure or prevent any disease.

NUTRABIO
WITHOUT COMPROMISE SINCE 1996
Manufactured by NutraBio Labs, Inc.
564 Lincoln Blvd., Middlesex, NJ 08846
www.nutrabilo.com / info@nutrabilo.com (732-748-8806)

FULL LABEL DISCLOSURE
NO PROPRIETARY BLENDS | EVERY INGREDIENT DISCLOSED WITH DOSAGE
ABSOLUTELY NO AMINO ACID SPIKING

