

Slimvance® Core Slimming Complex

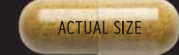
Supplement Facts

Serving Size Two Brownish-Green Filled Capsules

Amount Per Serving	% Daily Value
Slimvance® Patented Blend	900 mg*
Moringa oleifera Leaf Extract	
Murraya koenigii Leaf Extract	
Curcuma longa Rhizome Extract (Standardized to Curcuminoids = 63 mg)	

* Daily Value not established.

OTHER INGREDIENTS: Cellulose, Calcium Silicate, Gellan Gum, Magnesium Stearate Vegetable Source.



CLA

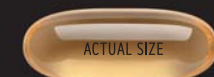
Supplement Facts

Serving Size Two Yellow Softgel Capsules

Amount Per Serving	% Daily Value
Calories	25
Total Fat	2.5 g 3%†
Conjugated Linoleic Acid (CLA)	2 g *

† Percent Daily Value based on a 2,000 calorie diet.
* Daily Value not established.

OTHER INGREDIENTS: Safflower Seed Oil, Gelatin, Glycerin, Purified Water.



Slimvance® is a trademark of PLT Health Solutions - Laila Nutraceuticals, LLC. US Patent #8,541,383 and international patents pending.

KEEP OUT OF REACH OF CHILDREN.
Store in a cool, dry place.

For More Information:
1-877-462-4700
GNC.com

Waterex™

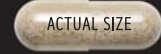
Supplement Facts

Serving Size One Tan Filled Capsule

Amount Per Serving	% Daily Value
Vitamin B-6 (as Pyridoxine Hydrochloride)	25 mg 1471%
Magnesium (as Magnesium Oxide)	25 mg 6%
Corn (Zea mays) Silk Powder	6.25 mg *
Fennel (Foeniculum vulgare) Seed Powder	6.25 mg *
Garlic (Allium sativum) Clove Powder	6.25 mg *
Horsetail Rush (Equisetum arvense) Stem Powder	6.25 mg *
Parsley (Petroselinum crispum) Leaf Powder	6.25 mg *
Uva Ursi (Arctostaphylos uva-ursi) Leaf Extract 3:1	6.25 mg *

* Daily Value not established.

OTHER INGREDIENTS: Cellulose, Gelatin, Potassium Chloride, Magnesium Stearate Vegetable Source, Silicon Dioxide, Maltodextrin, Calcium Silicate.



† In a randomized, double-blind, placebo-controlled study of 111 healthy participants, those taking the GNC vitamin and mineral blend for six weeks had statistically significant increases in serum levels of a group of B vitamins and a group of antioxidants and carotenoids based on a multivariate statistical analysis when compared to those taking placebo or a basic multivitamin. Statistical improvements in SF-36 Vitality and Mental Health scores were also observed compared to placebo.

* A randomized clinical study of 140 healthy overweight people compared the use of Slimvance® in conjunction with an 1800 calorie diet and walking plan to a placebo with the same diet and walking plan. Those on Slimvance® lost almost 10 more pounds (-11.81 pounds vs. -1.91 pounds), lost over an inch more around the hips (-1.76 inches vs. -0.48 inches), and lost over an inch more around the waist (-2.12 inches vs. -0.68 inches) than the placebo group after 16 weeks. Use in conjunction with the diet and exercise plan available at GNC.com/learn.

4 IN 1

PRODUCTS DAILY PACK

CLINICALLY BACKED MULTIVITAMIN
Cutting calories combined with intense exercise increases the need for vital nutrients. GNC's clinically backed, high-potency multi is shown to boost levels of key nutrients in the body, including immune-supporting and energy-producing nutrients. Plus, it's shown to help you feel better and work better than a basic multi.**

CLA
2 g of CLA fuels energy and fat metabolism.*

SLIMVANCE® CORE SLIMMING COMPLEX
Support your metabolism with Slimvance®, a clinically proven botanical blend shown to burn more calories, increase metabolic rate, and target fat metabolism – without stimulants.**

WATEREX™
Waterex™ features a blend of herbs traditionally used for water regulation.*

* These statements have not been evaluated by the Food and Drug Administration. This product is not intended to diagnose, treat, cure, or prevent any disease.

NEW: NOW WITH SLIMVANCE® CORE SLIMMING COMPLEX**

ADVANCED MUSCLE PERFORMANCE

RIPPED NON-STIM

VITAPAK® PROGRAM

Burn more calories with clinically backed botanical ingredients**
Target fat metabolism*
Help regulate excess water*

FEEL BETTER™
Clinically Backed
MULTIVITAMIN

4 PRODUCTS IN 1 CUTTING SYSTEM

30 PACKS
30-DAY SUPPLY

DIETARY SUPPLEMENT

* These statements have not been evaluated by the Food and Drug Administration. This product is not intended to diagnose, treat, cure, or prevent any disease.

CODE 220433

DIRECTIONS: As a dietary supplement, take the contents of one pack daily with food every morning.
Each pack contains:

Clinically Backed Multivitamin

Supplement Facts

Serving Size Two Beige Caplets

Amount Per Serving	% Daily Value
Vitamin A (50% as beta-Carotene & 50% as Retinyl Acetate)	1500 mcg RAE 167%
Vitamin C (as Ascorbic Acid & Calcium Ascorbate)	300 mg 333%
Vitamin D (as Cholecalciferol)	50 mcg (2000 IU) 250%
Vitamin E (as d-alpha Tocopheryl Acetate)	20.1 mg 134%
Vitamin K (as Phytanadione)	80 mcg 67%
Thiamin (Vitamin B-1)(as Thiamin Mononitrate)	50 mg 4167%
Riboflavin (Vitamin B-2)	50 mg 3846%
Niacin (as Niacinamide & Niacin)	50 mg 313%
Vitamin B-6 (as Pyridoxine Hydrochloride)	50 mg 2941%
Folate (Folic Acid 400 mcg)	680 mcg DFE 170%
Vitamin B-12 (as Cyanocobalamin)	50 mcg 2083%
Biotin	300 mcg 1000%
Pantothenic Acid (as Calcium d-Pantothenate)	50 mg 1000%
Choline (as Choline Bitartrate)	10 mg 2%
Calcium (as Calcium Carbonate, Calcium d-Pantothenate, Dicalcium Phosphate & Calcium Ascorbate)	200 mg 15%
Iodine (as Potassium Iodide)	150 mcg 100%
Magnesium (as Magnesium Oxide)	130 mg 31%
Zinc (as Zinc Oxide)	25 mg 227%
Selenium (as L-Selenomethionine)	200 mcg 364%
Copper (as Copper Sulfate)	2 mg 222%
Manganese (as Manganese Sulfate)	2 mg 87%
Chromium (as Chromium Chloride)	120 mcg 343%
Molybdenum (as Sodium Molybdate)	75 mcg 167%
alpha-Lipoic Acid	25 mg *
Inositol	10 mg *
Silica (as Silicon Dioxide)	4 mg *
Saw Palmetto (Serenoa repens) Berry Extract	3 mg *
Pumpkin (Cucurbita spp.) Seed Powder	3 mg *
Boron (as Sodium Borate)	2 mg *
Lutein (as Marigold [Tagetes erecta] Flower Extract)	2 mg *
Lycopene	1 mg *
Zeaxanthin Isomers (as Marigold [Tagetes erecta] Flower Extract)	400 mcg *
Astaxanthin (as Haematococcus pluvialis)	50 mcg *
Vanadium (as Sodium Metavanadate)	10 mcg *

* Daily Value not established.

OTHER INGREDIENTS: Cellulose, Corn Starch, Stearic Acid Vegetable Source, Magnesium Stearate Vegetable Source, Titanium Dioxide (Mineral Whitener), Polyethylene Glycol, Talc, Caramel (Color), Natural Vanilla Mint Flavor, Steviol Glycosides.

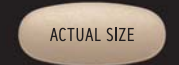
CONTAINS: Fish (Anchovy, Mackerel, Sardine, Whiting, Pollock, Smelt, Salmon, Tuna, Cod, or a Combination Thereof) and Soybeans.

Distributed by:
GNC Holdings, LLC
Pittsburgh, PA 15222 USA

Contains a bioengineered food ingredient.

▲ WARNING: Cancer and Reproductive Harm - www.P65Warnings.ca.gov. Consult your physician prior to using this product if you are pregnant, nursing, taking medication, or have a medical condition. Discontinue use two weeks prior to surgery. Inform your physician of this product's biotin content before any lab test. Biotin may cause a temporary flushing reaction.

No Artificial Flavors, Gluten Free.



* These statements have not been evaluated by the Food and Drug Administration. This product is not intended to diagnose, treat, cure, or prevent any disease.