

200 MG
CAFFEINE

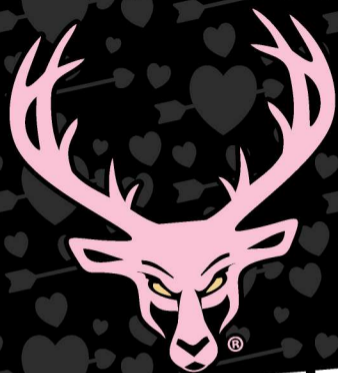
6 G PUMP*
CITRULLINE MALATE 2:1

2 G BETA-ALANINE
MUSCLE ENDURANCE*

200 MG
GPCgold™

TART HEART

PRE-WORKOUT



BUCKED UP®
TART HEART

NATURAL FLAVORS
DIETARY SUPPLEMENT • NET WT 10.8 oz (306 g)



FOCUS*

PUMP*

STRENGTH*

GROWTH*

GAME-CHANGING FORMULA

DAS LABS presents BUCKED UP®, a game-changing formula set to revolutionize pre-workout. This scientifically based, **non-proprietary blend** with no fillers is loaded with the most essential ingredients, including Deer Antler Velvet, to help enhance your workout.

PRIME INGREDIENTS

- **Citrulline Malate 2:1** 6g to help maximize blood flow (nitric oxide booster)*
- **Beta-Alanine** promotes strength, endurance, and muscle growth*
- **GPCgold™** – Alpha GPC has been shown to help sharpen mental focus*
- **Deer Antler Velvet** supports accelerated recovery*
- **AstraGin®** has been clinically shown to help increase citrulline absorption*
- **SENACTIV®** helps boost VO2 MAX and athletic performance*

#GETBUCKEDUP
BUCKEDUP.COM



*These statements have not been evaluated by the Food and Drug Administration. This product is not intended to diagnose, treat, cure, or prevent any disease.

SUGGESTED USE: Mix 1 rounded scoop into 6-8 oz of water, and consume 15-30 minutes prior to physical activity. Store in a cool, dry place.

CAUTION: Not for use by anyone under 18. Use only as directed. Consult your physician prior to use if you are pregnant or nursing, taking medications, or being treated for any medical condition. Discontinue use if you experience any adverse reaction. Do not use if seal is broken or missing. **KEEP OUT OF REACH OF CHILDREN. EACH SERVING CONTAINS 200 mg OF CAFFEINE.**

Supplement Facts

Serving Size 1 Scoop (10.2 g)
Servings Per Container 30

	Amount Per Serving	%DV
Vitamin B12 (as Methylcobalamin)	100 mcg	4,167%
Sodium	40 mg	2%
Citrulline Malate 2:1	6,000 mg	†
Beta-Alanine	2,000 mg	†
Caffeine Anhydrous	200 mg	†
GPCgold™ (Alpha GPC 50%)	200 mg	†
Taurine	100 mg	†
Himalayan Rock Salt - with Trace Minerals	100 mg	†
Deer Antler Velvet Extract	50 mg	†
AstraGin® (Astragalus membranaceus (root), Panax notoginseng (root))	25 mg	†
Senactiv® (Panax notoginseng (root), Rosa roxburghii (fruit))	25 mg	†

† Percent Daily Values (DV) are based on a 2,000 calorie diet.
‡ Daily Value not established.

Other Ingredients: Calcium Silicate, Silicon Dioxide, Natural Flavors, Sucralose, Blue Spirulina (for color).

GPCgold™ is a trademark of Golden Key Ingredients LLC. | AstraGin® & Senactiv® are registered trademarks of NuLiv Science USA Inc.

SOUR CANDY FLAVOR



8660827.00 • 25.09.00

Manufactured exclusively for DAS Labs
781 Auto Mall Dr #102 American Fork, UT 84003
855.205.2825 | buckedup.com
TM & © 2025 DAS Labs LLC.



MANUFACTURED IN USA
Product of USA

