

**Nature's Lab EnZym Balance** contains a blend of herbs and enzymes to promote digestive wellness and comfort.<sup>†</sup> This formula contains aloe vera, ginger root and turmeric to help regulate and soothe the digestive system along with herbs and digestive enzymes to enhance digestion and the absorption of nutrients typically found in a healthy diet.<sup>†</sup>

**Warnings:** Pregnant or lactating women and people with known medical conditions and/or taking drugs should consult with a qualified healthcare practitioner prior to taking dietary supplements. Discontinue use and consult your doctor if any adverse reactions occur.

<sup>†</sup>These statements have not been evaluated by the Food and Drug Administration. This product is not intended to diagnose, treat, cure or prevent any disease.

**Manufactured in the USA with imported and US ingredients.**

Item #14414



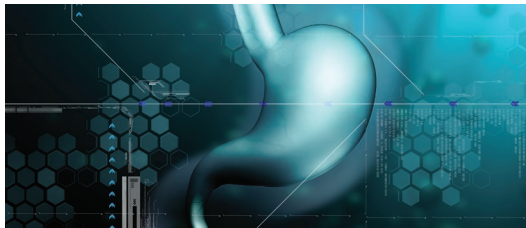
Manufactured for Nature's Lab  
6980 W. Warm Springs Road  
Suite 100  
Las Vegas, NV 89113  
1-800-211-4188  
NaturesLab.com



**Nature's Lab**<sup>®</sup>

# ENZYM BALANCE

SUPPORTS DIGESTIVE HEALTH<sup>†</sup>



180 EASY-TO-SWALLOW VEGETARIAN CAPSULES

D I E T A R Y S U P P L E M E N T

**Suggested Use:** As a dietary supplement, take 1 capsule one time daily, preferably with a meal, or as directed by a qualified healthcare practitioner.

## Supplement Facts

Serving Size: 1 Delayed Release Capsule  
Servings Per Container: 180

	Amount Per Serving	% DV
Aloe Vera Leaf Gel ( <i>Aloe barbadensis</i> )	100 mg	*
Ginger Root ( <i>Zingiber officinale</i> )	100 mg	*
Turmeric Root ( <i>Curcuma longa</i> )	100 mg	*
<b>Herbal Blend</b>	120 mg	*
Oregano Leaf ( <i>Origanum vulgare</i> ), Clove Bud ( <i>Syzygium aromaticum</i> ), Thyme Leaf ( <i>Thymus vulgaris</i> )		
<b>Digestive Enzyme Blend</b>	100 mg	*
Pectinase, Bromelain, Beta-Glucanase, Alpha Galactosidase, Xylanase, Lipase, Hemicellulase, Neutral Protease, Phytase, Glucoamylase, Diastase, Invertase, Cellulase, Peptidase, Papain, Fungal Protease		

\*Daily Value not established.

**Other Ingredients:** Hypromellose (capsule), gellan gum (capsule), rice hull concentrate.

**Free of:** Sugar, Salt, Dairy, Eggs, Peanuts, Tree Nuts, Fish, Shellfish, Yeast, Wheat, Soy, Gluten, Titanium Dioxide, Artificial Colors and Flavors.

Do not use if seal is broken. Keep out of reach of children. Store in a cool, dry place.

Manufactured in a facility that also processes soy, egg, milk, fish, shellfish, tree nuts and sesame.

ZNLB14414-L2 Rev. 002