

- 1** BUILD
- 2** RECOVER
- 3** STRENGTH

ADVANCED BENEFITS OF RYSE UP LOADED PROTEIN™

FOLLOW RYSE ON SOCIAL @RYSE

SCAN ME

WWW.RYSESUPPS.COM

California Prop 65 Warning: This product may expose you to chemicals known to the state of California to cause cancer, birth defects or other reproductive harm. For more information, go to www.P65Warnings.ca.gov.

INFO@RYSESUPPS.COM / 1-855-RYSEUP1 (797-3871) / WWW.RYSESUPPS.COM

CLDPR0271PP-R01

8 10137 32204 9



Jet-Puffed are fitness

RYSE UP
SUPPLEMENTS™

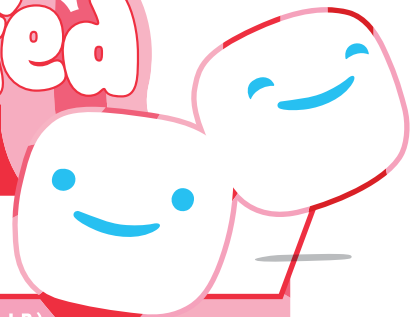


RYSE

Jet-Puffed
LOADED PROTEIN
PREMIUM WHEY PROTEIN FORMULA

PEPPERMINT FLAVOR
NATURAL AND ARTIFICIAL FLAVOR

PROTEIN DRINK MIX // NET WT. 945G (2.1 LB)



27
SERVINGS

Nutrition Facts
About 27 servings per container
Serving size 1 Scoop (35g)

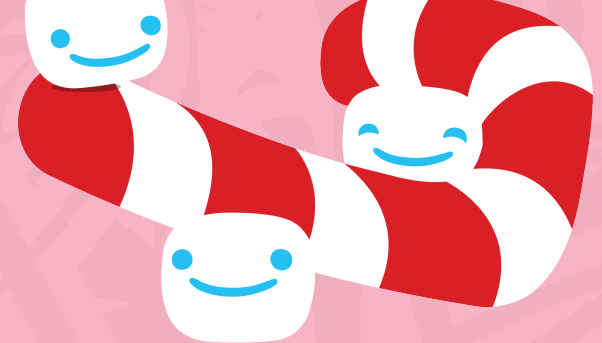
Amount per serving		% Daily Value*
Calories	140	
Total Fat	2.5g	3%
Saturated Fat	2g	10%
Trans Fat	0g	
Cholesterol	45mg	15%
Sodium	220mg	10%
Total Carbohydrate	3g	1%
Dietary Fiber	1g	4%
Total Sugars	1g	
Includes 0g Added Sugars		0%
Protein	25g	50%
Vitamin D	0mcg	0%
Calcium	110mg	8%
Iron	0.2mg	2%
Potassium	140mg	2%

*The % Daily Value (DV) tells you how much a nutrient in a serving of food contributes to a daily diet. 2,000 calories a day is used for general nutrition advice.

INGREDIENTS: Whey Protein Isolate, Whey Protein Concentrate, MCT Oil Powder (Medium Chain Triglycerides, Gum Acacia), Organic Agave Inulin, Natural & Artificial Flavors, Salt, Gum Blend (Cellulose Gum, Xanthan Gum, Carrageenan), Soy and/or Sunflower Lecithin, Sucralose, Vegetable Juice (Color), Acesulfame Potassium

ALLERGENS: Milk, Soy

Jet-Puffed



SUGGESTED USE: Mix one scoop (35g) of RYSE LOADED JET-PUFFED® Protein with 6-8 oz. of water or beverage of choice. Consume anytime to supplement your protein intake. Vary amount of liquid to taste.



SHAKE IT, SPOON IT, BLEND IT, ENJOY!

How do you **JET-PUFF**? Shake it, spoon it or blend it! From blended protein smoothies to protein oats, there are countless ways to enjoy the delicious taste from our **RYSE LOADED JET-PUFFED® Protein**.

WARNING: Ryse up™ products are intended only for healthy adults over the age of 18. Do not use if you are currently pregnant or nursing, could be pregnant, or are attempting to become pregnant. Consult a licensed healthcare practitioner before using this product. Discontinue use and contact a doctor immediately if you experience an irregular or rapid heart beat, chest pain, shortness of breath, dizziness, lightheadedness, fainting or presyncope, tremors, headache, nausea, or other similar symptoms. If you are a performance athlete, please check with your sanctioning body prior to use to ensure compliance.
NOTICE: Significant product settling may occur. Contents sold by weight not volume.

RYSE

MADE IN THE USA
WITH COMPONENTS OF DOMESTIC AND INTERNATIONAL ORIGIN

The JET-PUFFED trademarks are owned by Kraft Foods and are used under license.
© 2025 Kraft Foods.

MANUFACTURED EXCLUSIVELY FOR: RYSE UP SPORTS NUTRITION, LLC, 631 INDUSTRY WAY, PROSPER, TX 75078