

# Brains love it.

## COGNICELL™

- Supports short- & long-term memory in healthy adults.\*
- Derived from red grapes which provide polyphenols.

## NEUROFACTOR®

- Supports working memory.\*
- Made from the nutrient rich fruit of the coffee cherry plant.

## VITAMINS B6, B12 & FOLIC ACID

- Essential nutrients for brain health & cognitive function.\*



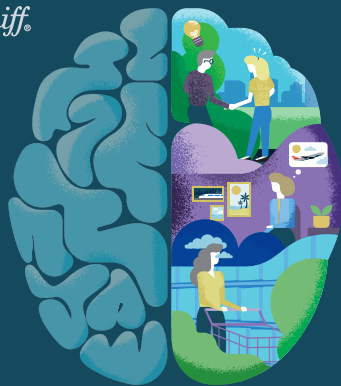
Neuriva® is:

- Decaffeinated
- Vegetarian
- Gluten-Free

★ THESE STATEMENTS HAVE NOT BEEN EVALUATED BY THE FOOD AND DRUG ADMINISTRATION. THIS PRODUCT IS NOT INTENDED TO DIAGNOSE, TREAT, CURE OR PREVENT ANY DISEASE.

**NEW** with Clinically Tested Cognicell™

Schiff®  
SINCE 1938



# neuriva®

BRAIN HEALTH\*

## MEMORY 3D™



**SUPPORTS:**

**SHORT-TERM MEMORY\***

**LONG-TERM MEMORY\***

**WORKING MEMORY\***

DIETARY SUPPLEMENT

ONE CAPSULE A DAY

30 CAPSULES

**DIRECTIONS:** Adults 18 years and older, take one (1) capsule daily. Do not exceed recommended serving size.

## Supplement Facts

Serving Size 1 Capsule

	Amount Per Serving	% Daily Value
Vitamin B6 (as pyridoxine hydrochloride)	1.7 mg	100%
Folate	680 mcg DFE (400 mcg folic acid)	170%
Vitamin B12 (as cyanocobalamin)	2.4 mcg	100%
Cognicell™ Grape Extract ( <i>Vitis vinifera</i> ) Fruit	250 mg	†
Neurofactor® Coffee Fruit Extract ( <i>Coffea arabica</i> )	100 mg	†

†Daily Value not established.

**Other Ingredients:** capsule (hypromellose), stearic acid, maltodextrin, silicon dioxide

**Distributed by:**  
RB Health (US) LLC,  
Parsippany, NJ  
07054-0224

©2024 RB Health

For information call: 1-800-526-6251  
[www.neuriva.com](http://www.neuriva.com)

Do not take if you are on medication or have a known medical condition unless you have consulted your physician. Do not take if pregnant or breastfeeding or considering pregnancy.

**KEEP OUT OF REACH OF CHILDREN.**

Protected with a tamper evident seal. Do not use if seal under cap is broken or missing. Store in a cool, dry place with lid tightly closed and protected from light.

#Neurofactor® & Cognicell™

Neurofactor® products are covered by U.S. patents. Details found at [FCpatent.com](http://FCpatent.com).

Cognicell™ is used under license from Bionap S.r.l.



reckitt

# Supports 3 dimensions of memory\*

## 1 SHORT-TERM MEMORY

Reproduction, recognition or recall of a limited amount of information within a period of 10-30 seconds.

## 2 LONG-TERM MEMORY

A relatively permanent information storage bank enabling one to use knowledge minutes or even years after initially learned.

## 3 WORKING MEMORY

The short-term maintenance and manipulation of information for performing complex tasks.

# Do More For Your Memory

We're on a mission to help all brains be the best they can be. Neuriva® makes supporting brain health easy and convenient with clinically tested ingredients.\* Now, that is something worth remembering!

Learn more at [neuriva.com](http://neuriva.com)