

Dr. Don Colbert, MD. is a practicing Medical Doctor and three-time New York Times Bestselling author. He formulated Divine Health's Silical® 1 to promote bone strength and help reduce risk of osteoporosis.*

This product was formulated to work in conjunction with Dr. Colbert's Silical® 2. (Optimal 2 hours apart)

Suggested Usage: Take 2 capsules twice a day with meals or as directed by your healthcare practitioner.

Warning: If you are pregnant, may become pregnant, or breastfeeding, consult with your healthcare practitioner before using this product. Do not use if either tamper-evident seal is broken or missing. Keep out of the reach of children.

Do not store in direct sunlight.
Store in a cool, dry place.

*These statements have not been evaluated by the Food and Drug Administration. This product is not intended to diagnose, treat, cure, or prevent any disease.

"Beloved, I pray that you may prosper in all things and be in health, just as your soul prospers."

3 John 1:2

Divine Health®
Don Colbert, M.D.

DR. COLBERT'S SILICAL® 1

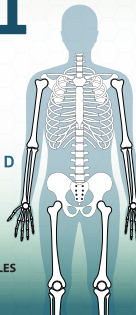
BONE HEALTH

IMPROVED BONE HEALTH SUPPLEMENT
THAT ENHANCES CALCIUM AND VITAMIN D

- ✔ May Reduce Osteoporosis Risk *
- ✔ Bone Mineralization *

DIETARY
SUPPLEMENT

120 CAPSULES



Supplement Facts

Serving Size: 4 Capsules
Servings Per Container: 30

	Amount Per Serving	% DV *
Vitamin D (as cholecalciferol)	1,000 IU	250%
Calcium (as calcium carbonate)	500 mg	50%
Magnesium (as magnesium citrate)	100 mg	25%

* Percent Daily Values are based on 2,000 calorie diet.

Other ingredients: Vegetarian capsule (hypromellose), Microcrystalline Cellulose, Rice Flour, and Acacia Fiber.

Adequate calcium and vitamin D throughout life, as part of a well-balanced diet, may reduce the risk of osteoporosis.

Manufactured For:
Divine Health®
325 Morrison Park Dr. Suite 130
Southlake, TX 76092
407-732-6952
www.divinehealth.com



8 57772 00897 6