

Suggested Usage: As a dietary supplement, take 1 capsule twice a day; preferably with meals or as directed by a healthcare provider.

Warning: THIS PRODUCT IS ONLY INTENDED TO BE CONSUMED BY HEALTHY INDIVIDUALS OVER THE AGE OF 18 YEARS. If you are pregnant, nursing, or taking any medications, consult your healthcare provider before use. Keep out of reach of children.

**Do not store in direct sunlight.
Store in a cool, dry place.**

*These statements have not been evaluated by the Food and Drug Administration. This product is not intended to diagnose, treat, cure, or prevent any disease.

"Beloved, I pray that you may prosper in all things and be in health, just as your soul prospers."
3 John 1:2

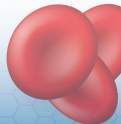
Divine Health[®]
Don Colbert, M.D.

CARB ASSIST

With Berberine and Ceylon Cinnamon

Contains Powerful Nutrients That Synergistically Encourage Normalized Blood Glucose*

- ✔ Promotes Heart Health*
- ✔ Supports Blood Sugar Levels *
- ✔ Maintains Healthy Circulation*
- ✔ Supports Glucose Metabolism*



Dietary Supplement

60 Capsules

Supplement Facts

Serving Size: 2 Capsules
Servings Per Container: 30

| | Amount Per Serving | % Daily [^] Value |
|---|--------------------|----------------------------|
| Biotin (as d-Biotin) | 3200 mcg | 10667% |
| Chromium (as Chromium Polynicotinate) | 800 mcg | 2286% |
| Alpha Lipoic Acid | 600 mg | † |
| Berberine HCl | 500 mg | † |
| Ceylon (Cinnamomum cassia) (Bark) Extract | 200 mg | † |
| Vanadyl Sulfate | 60 mg | † |

[^] Percent Daily Values are based on 2,000 calorie diet.
[†] Daily Value not established.

Other Ingredients: Vegetarian Capsules (Hydroxypropyl methylcellulose), Rice Flour, Acacia Fiber

Manufactured For:
Divine Health[®]
325 Morrison Park Dr, Suite 130
Southlake, TX 76092
407-732-6952
www.divinehealth.com

