



UNMATCHED ENERGY*

AMPLIFIED FOCUS*



ENHANCED MEMORY*

INCREASED PRODUCTIVITY*



ELEVATED MENTAL CLARITY*

NO SUGAR OR ARTIFICIAL COLORS



1000 MG

N-ACETYL-L-TYROSINE

400 MG

ALPHA-GPC 50%

200 MG

CAFFEINE

200 MG

URIDINE MONOPHOSPHATE

100 MG

L-THEANINE

15 MG

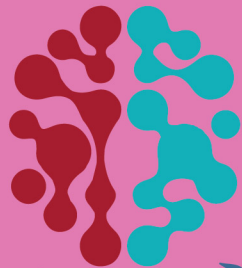
SAFFRON EXTRACT

200 MCG

HUPERZINE A

≥100%

5 ESSENTIAL VITAMINS



GORILLA MIND®



STRAWBERRY CANDY ENERGY DRINK

16 FL. OZ. (473 ML)

Nutrition Facts

Serving Size 1 can (16 fl. oz.)

Amount Per Serving Calories 10

Table with 2 columns: Nutrient, % Daily Value. Includes Total Fat, Sodium, Total Carbohydrate, Total Sugars, Protein, and various vitamins.

INGREDIENTS: Carbonated Filtered Water, Natural Flavors, Citric Acid, N-Acetyl-L-Tyrosine, Alpha-GPC 50% (L-alpha-glycerylphosphorylcholine), Malic Acid, Caffeine Anhydrous, Uridine 5'-Monophosphate, Sucralose, Sodium Benzoate, Potassium Sorbate, L-Theanine, Ascorbic Acid, Acesulfame Potassium, Nicotinamide, Saffron Extract, Edetate Calcium Disodium, Calcium Pantothenate, Pyridoxal 5'-Phosphate, Methylcobalamin, Huperzine A (from Huperzia serrata whole plant extract).

*Percent Daily Values are based on a 2,000 calorie diet.

GORILLA MIND ENERGY MATRIX

Table with 2 columns: Amount, Amount Per Can. Lists ingredients like N-Acetyl-L-Tyrosine, Alpha-GPC 50%, Caffeine, Uridine 5'-Monophosphate, L-Theanine, Saffron Extract, and Huperzine A.

Manufactured Exclusively For: Gorilla Mind, LLC 7154 W State Street, STE 138, Boise, ID 83714, USA support@gorillamind.com +1-833-GRLAMND



@GORILLAMIND GORILLAMIND.COM



* These statements have not been evaluated by the Food and Drug Administration. This product is not intended to diagnose, treat, cure, or prevent any disease.



CAUTION: This product is only intended for healthy adults, 18 years of age or older. Do not consume if you are sensitive to caffeine, or in combination with caffeine or stimulants from other sources. Too much caffeine may cause nervousness, irritability, sleeplessness, and occasionally, rapid heart rate. Not for use by women who are pregnant, nursing, or trying to become pregnant. Consult a licensed, qualified healthcare professional before consuming this product. Do not use if you are taking any prescription drug and/or have any medical condition. Do not exceed (2) cans per day.