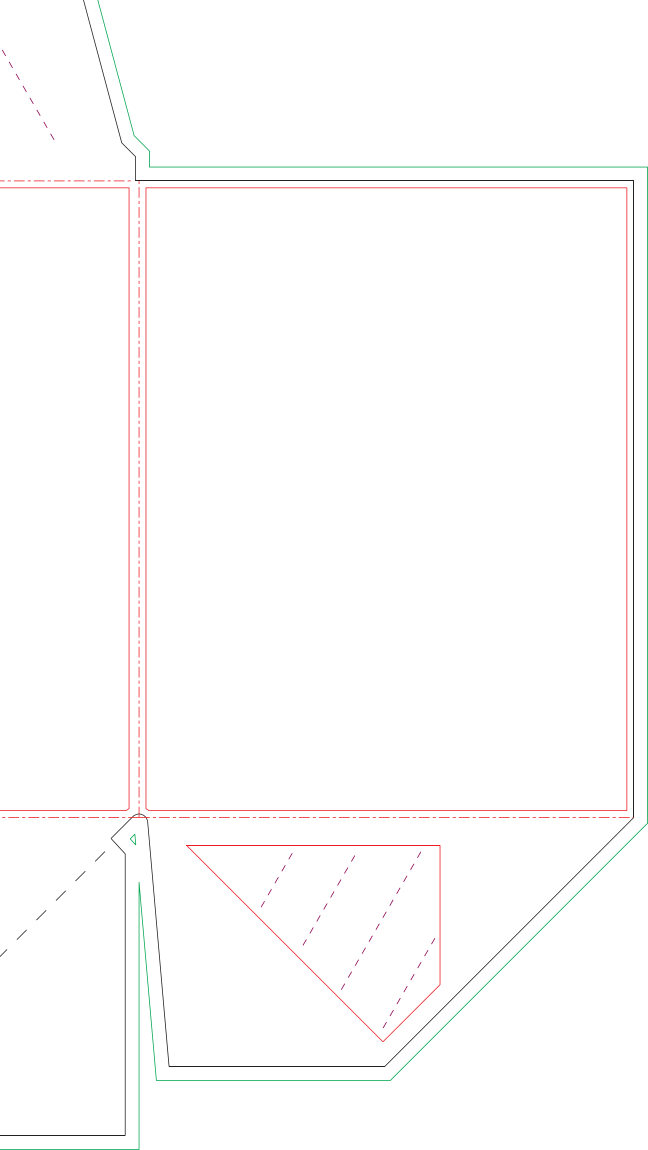
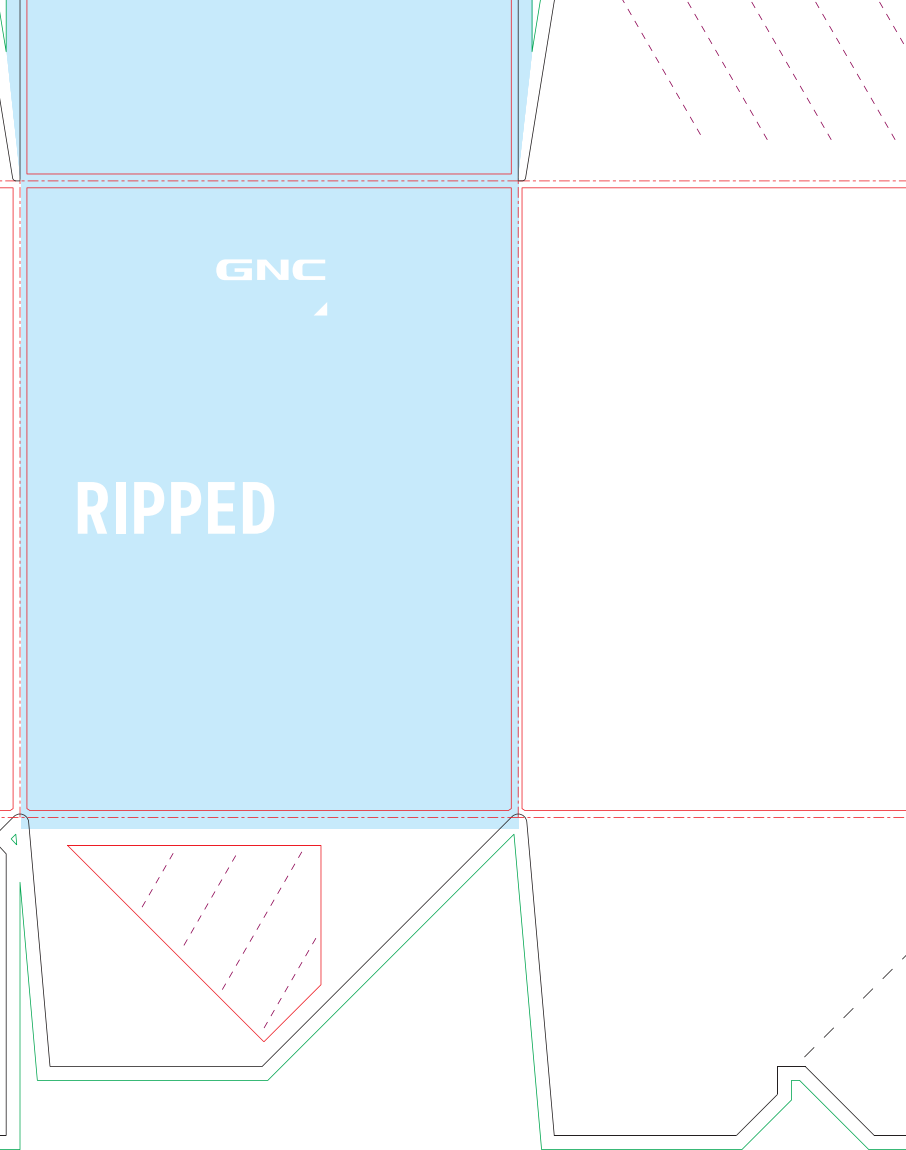
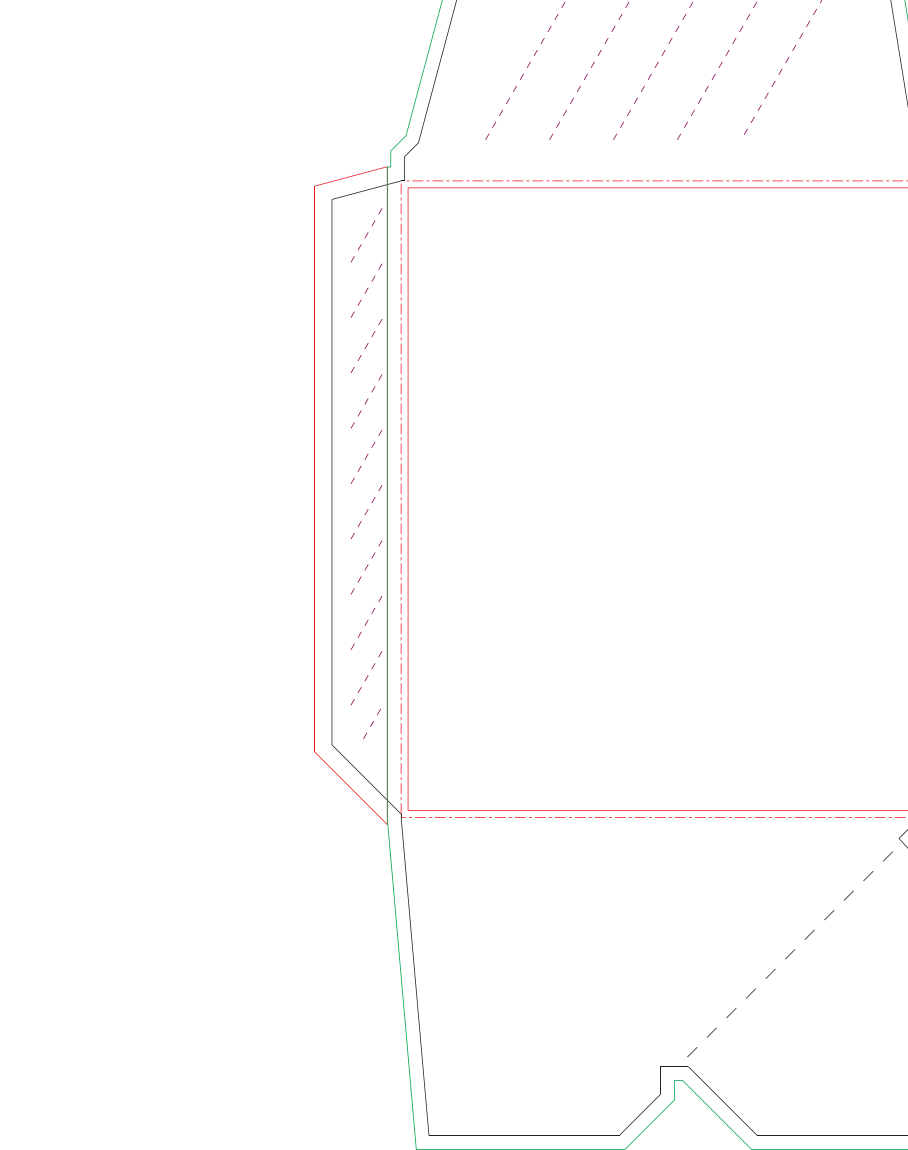
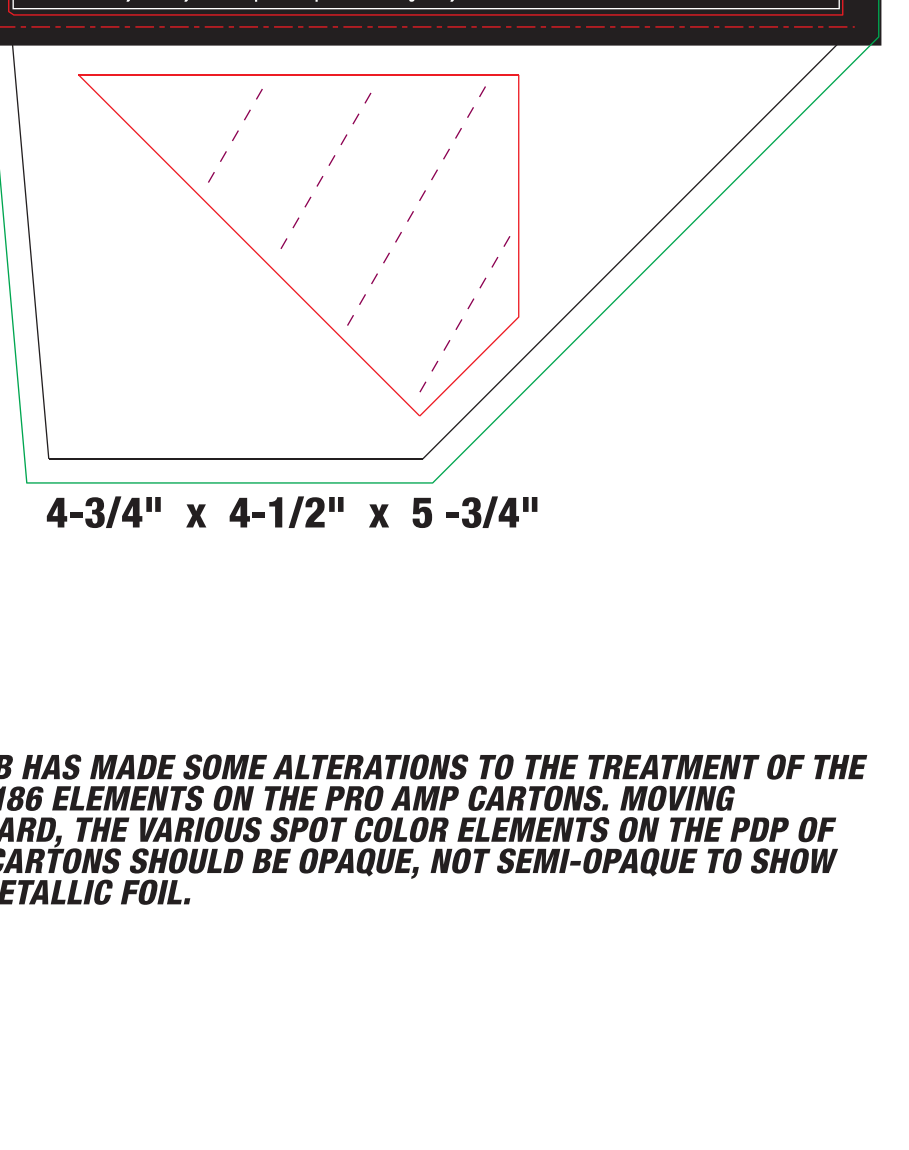
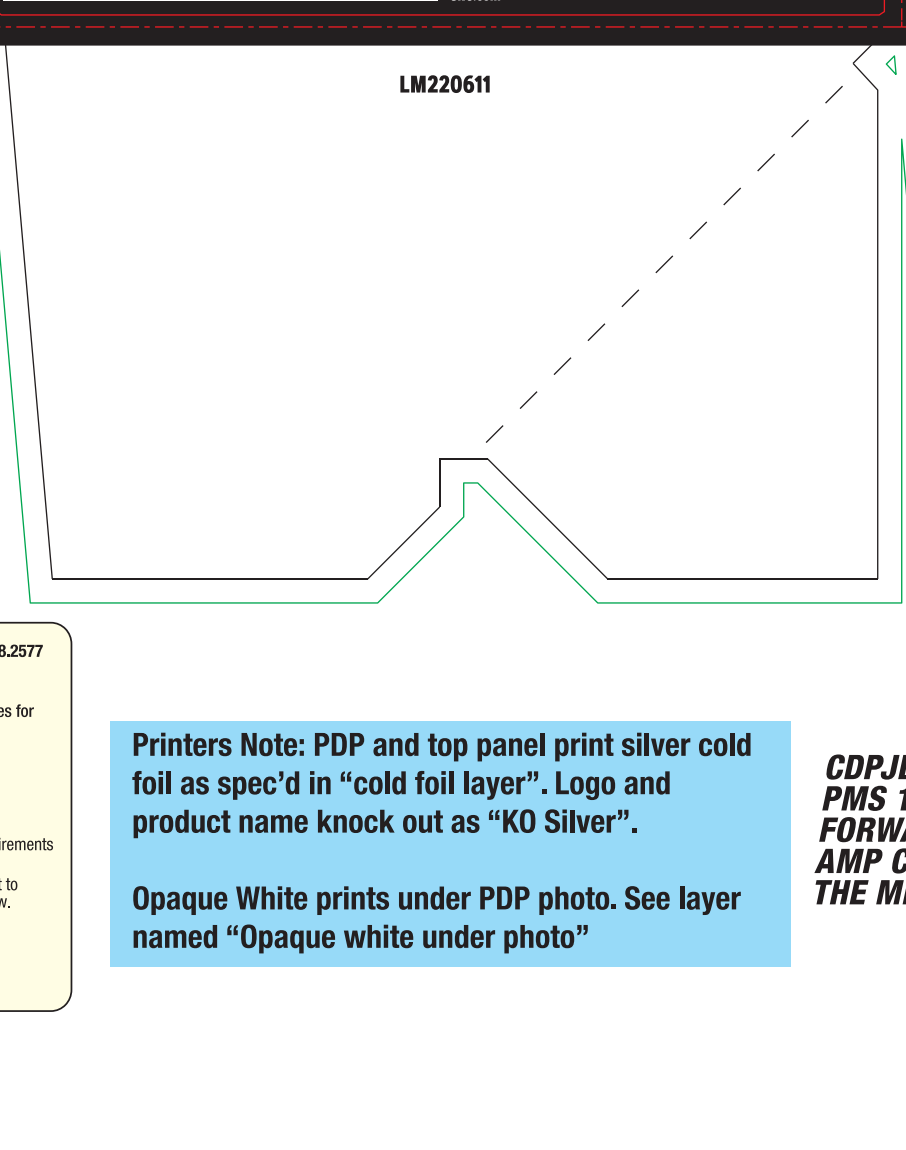
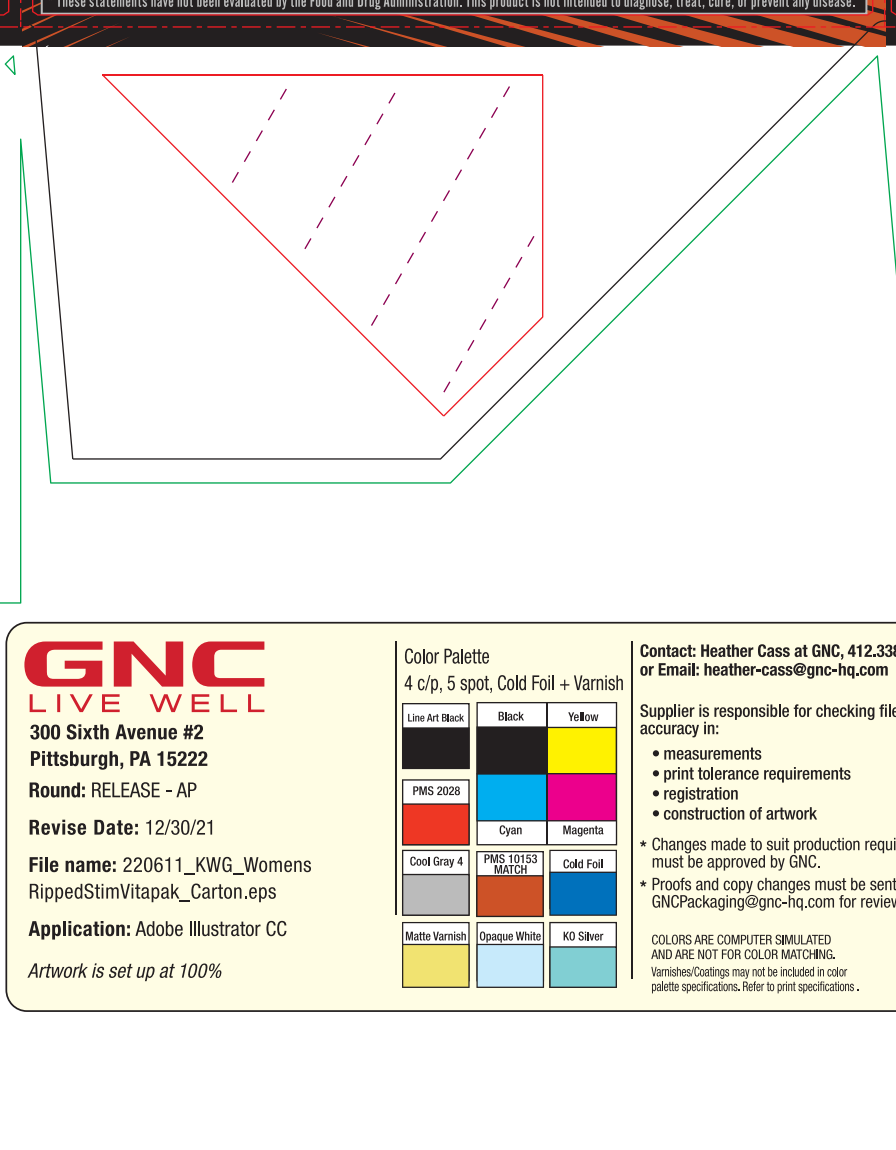
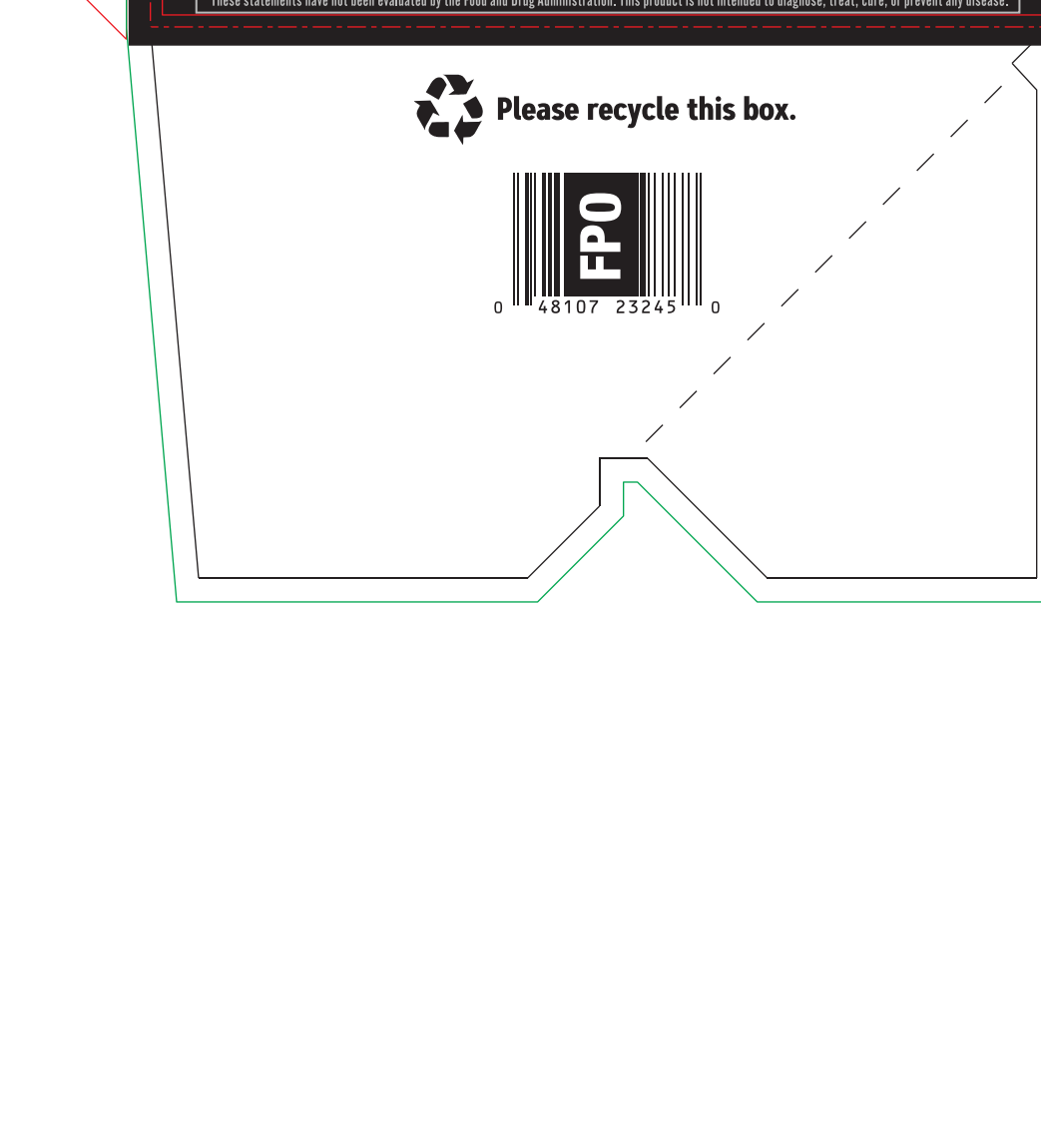
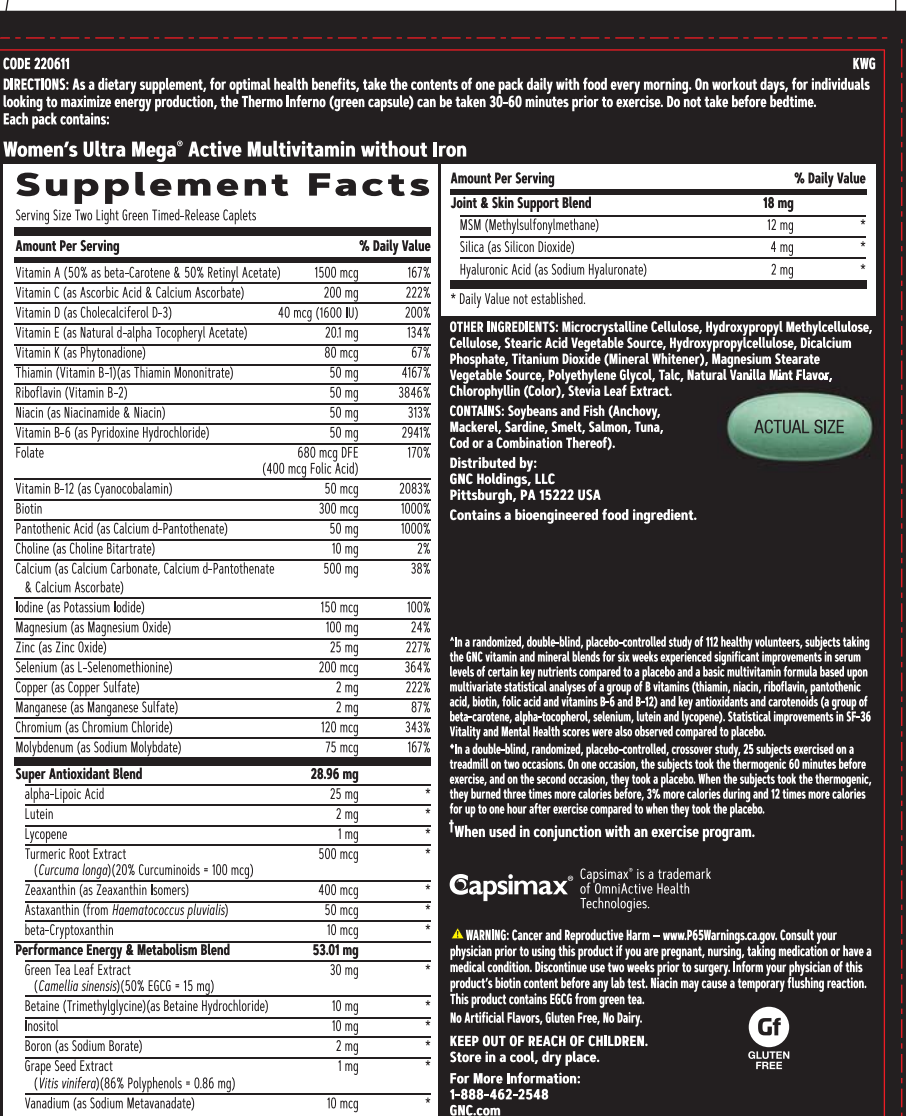
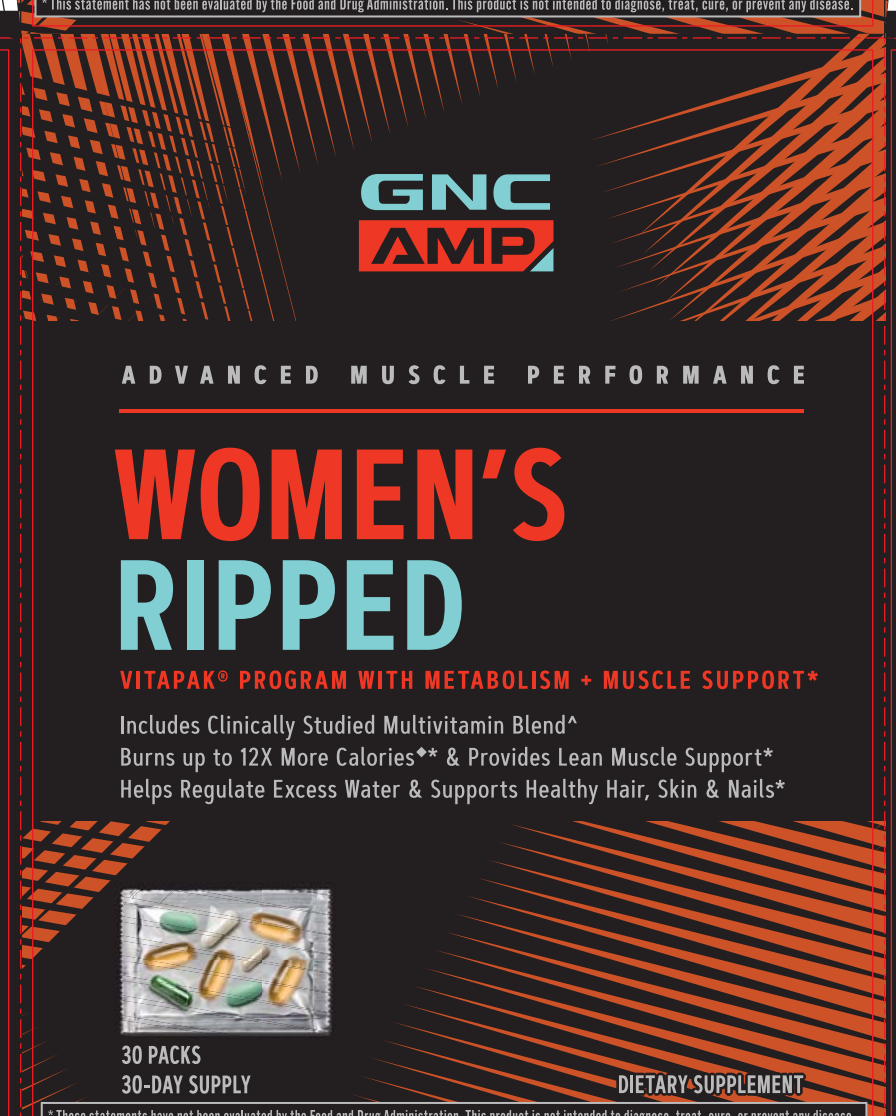
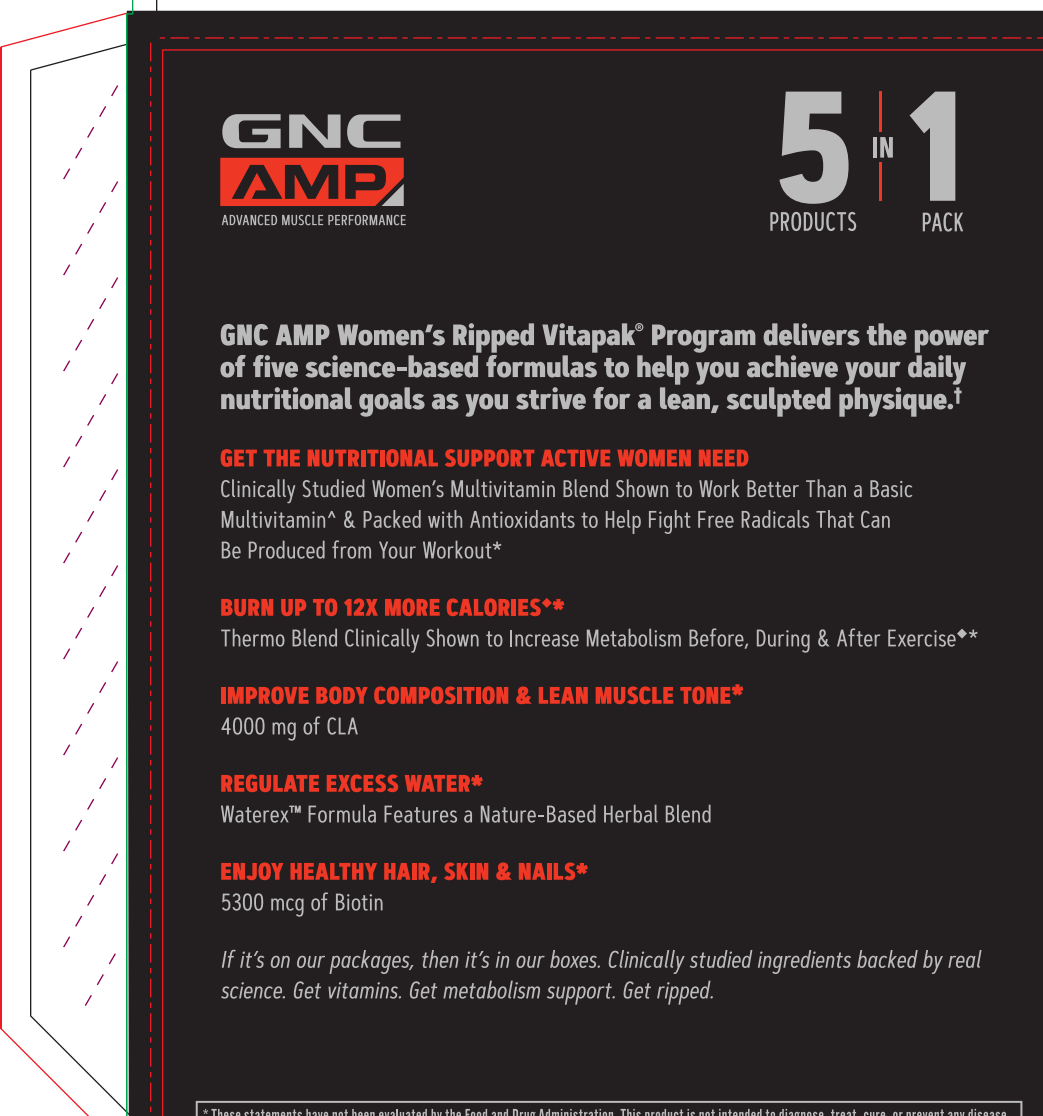
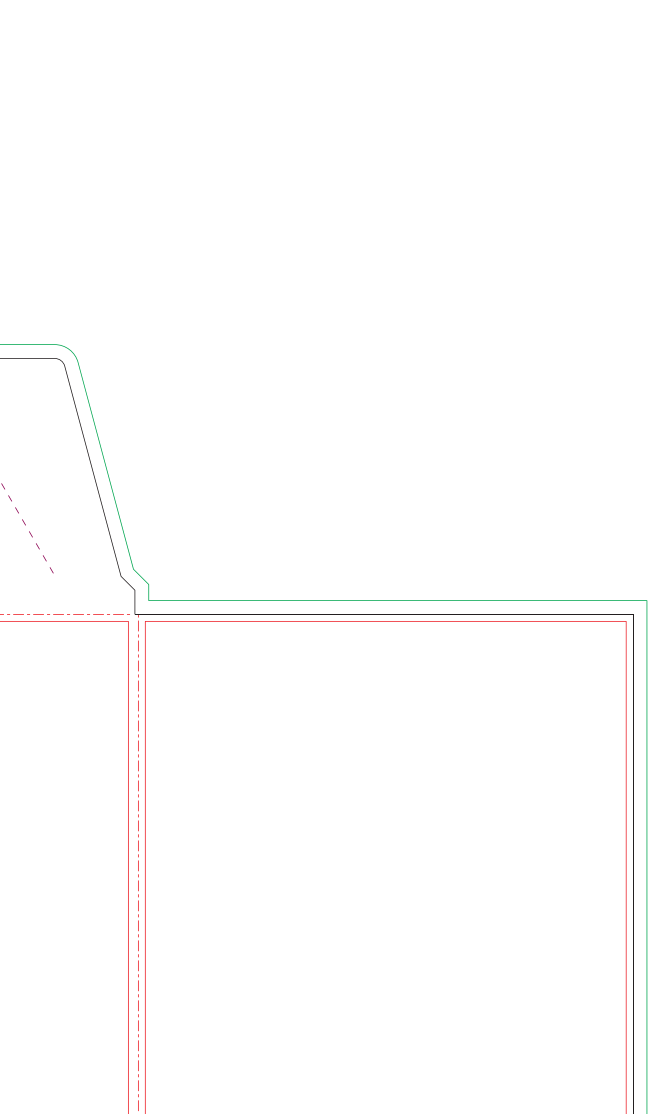
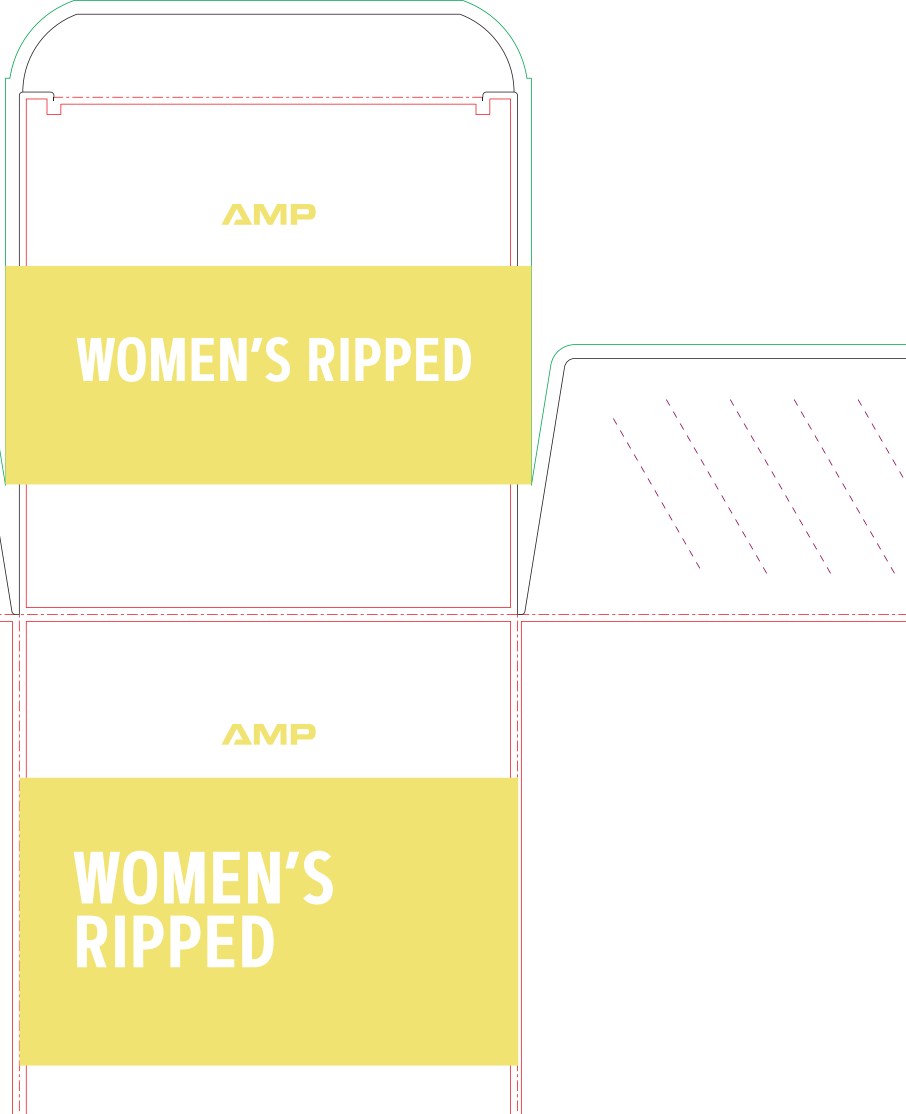
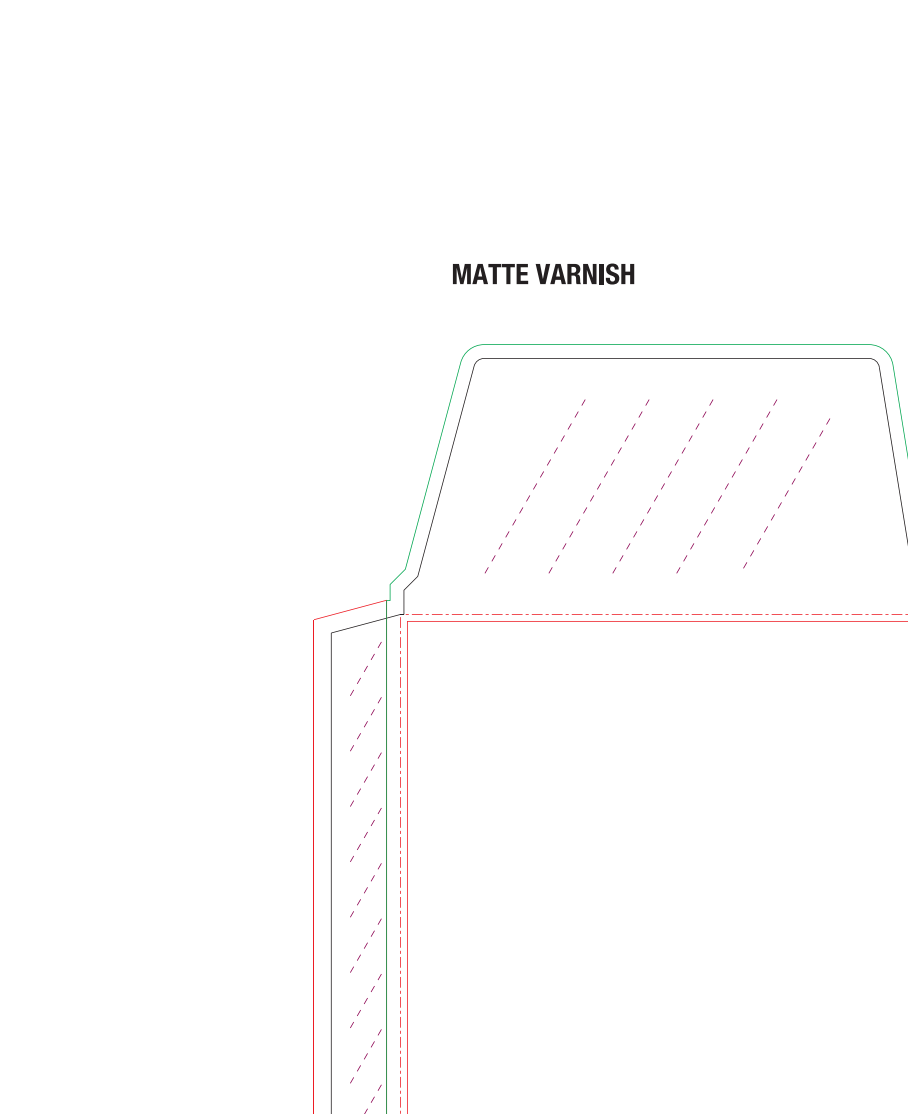


Inside of carton DOES NOT get printed or coated ALL GLUE ASSIST areas need to be UNCOATED



GNC LIVE WELL 300 Sixth Avenue #2 Pittsburgh, PA 15222 Round: RELEASE - AP Revise Date: 12/30/21 File name: 220611_KWG_Womens RippedStimVitapak_Carton.eps Application: Adobe Illustrator CC Artwork is set up at 100%

Printers Note: PDP and top panel print silver cold foil as spec'd in "cold foil layer". Logo and product name knock out as "KO Silver". Opaque White prints under PDP photo. See layer named "Opaque white under photo"

CDPJB HAS MADE SOME ALTERATIONS TO THE TREATMENT OF THE PMS 186 ELEMENTS ON THE PRO AMP CARTONS. MOVING FORWARD, THE VARIOUS SPOT COLOR ELEMENTS ON THE PDP OF AMP CARTONS SHOULD BE OPAQUE, NOT SEMI-OPAQUE TO SHOW THE METALLIC FOIL.

Supplement Facts table for Women's Ultra Mega Active Multivitamin without Iron. Includes columns for Amount Per Serving and % Daily Value. Lists vitamins A, C, E, K, B1, B2, B6, B12, Biotin, and minerals like Calcium, Magnesium, Zinc, Selenium, and Copper.

Supplement Facts tables for Thermo Inferno, CLA, Waterox, and Biotin 5000. Each table lists the amount per serving and percentage of daily value for various ingredients.