

Inside of carton DOES NOT get printed or coated All GLUE ASSIST areas need to be UNCOATED

GNC AMP ADVANCED MUSCLE PERFORMANCE

5 IN 1 PRODUCTS PACK

GNC AMP Women's Ripped Vitapak® Program delivers the power of five science-based formulas to help you achieve your daily nutritional goals as you strive for a lean, sculpted physique.†

GET THE NUTRITIONAL SUPPORT ACTIVE WOMEN NEED
Clinically Studied Women's Multivitamin Blend Shown to Work Better Than a Basic Multivitamin* & Packed with Antioxidants to Help Fight Free Radicals That Can Be Produced from Your Workout*

SUPPORT YOUR METABOLISM*
Stimulant-Free Thermo with a Potent Blend of Fruit & Herbal Extracts

IMPROVE BODY COMPOSITION & LEAN MUSCLE TONE*
4000 mg of CLA

REGULATE EXCESS WATER*
Waterex™ Formula Features a Nature-Based Herbal Blend

ENJOY HEALTHY HAIR, SKIN & NAILS*
5300 mcg of Biotin

If it's on our packages, then it's in our boxes. Clinically studied ingredients backed by real science. Get vitamins. Get metabolism support. Get ripped.

*These statements have not been evaluated by the Food and Drug Administration. This product is not intended to diagnose, treat, cure, or prevent any disease.

GNC AMP ADVANCED MUSCLE PERFORMANCE

WOMEN'S RIPPED
VITAPAK® PROGRAM WITH METABOLISM + MUSCLE SUPPORT*

NON-STIMULANT FORMULA

WOMEN'S RIPPED
VITAPAK® PROGRAM WITH METABOLISM + MUSCLE SUPPORT*

Includes Clinically Studied Multivitamin Blend*
Provides Non-Stimulant Metabolism & Lean Muscle Support*
Helps Regulate Excess Water & Supports Healthy Hair, Skin & Nails*

NON-STIMULANT FORMULA

30 PACKS
30-DAY SUPPLY

DIETARY SUPPLEMENT

*These statements have not been evaluated by the Food and Drug Administration. This product is not intended to diagnose, treat, cure, or prevent any disease.

CODE 220711 **JWG**

DIRECTIONS: As a dietary supplement, for optimal health benefits, take the contents of one pack daily with food every morning. On workout days, for individuals looking to maximize results, the Decaf Thermo Igniter 12X (yellow caplet) can be taken 30-60 minutes prior to exercise. Each pack contains:

Women's Ultra Mega® Active Multivitamin without Iron

Supplement Facts

Amount Per Serving	% Daily Value
Vitamin A (50% as beta-Carotene & 50% Retinyl Acetate)	1500 mcg 167%
Vitamin C (as Ascorbic Acid & Calcium Ascorbate)	200 mg 222%
Vitamin D (as Cholecalciferol D-3)	40 mcg (1600 IU) 200%
Vitamin E (as Natural d-alpha Tocopheryl Acetate)	201 mg 134%
Vitamin K (as Phytanadione)	80 mcg 67%
Thiamin (Vitamin B-1)(as Thiamin Mononitrate)	50 mg 4167%
Riboflavin (Vitamin B-2)	50 mg 3846%
Niacin (as Niacinamide & Niacin)	50 mg 313%
Vitamin B-6 (as Pyridoxine Hydrochloride)	50 mg 2941%
Folate	680 mcg DFE (400 mcg folic acid) 170%
Vitamin B-12 (as Cyanocobalamin)	50 mcg 2083%
Biotin	300 mcg 1000%
Pantothenic Acid (as Calcium d-Pantothenate)	50 mg 1000%
Choline (as Choline Bitartrate)	10 mg 2%
Calcium (as Calcium Carbonate, Calcium d-Pantothenate & Calcium Ascorbate)	500 mg 38%
Iodine (as Potassium Iodide)	150 mcg 100%
Magnesium (as Magnesium Oxide)	100 mg 24%
Zinc (as Zinc Oxide)	25 mg 227%
Selenium (as L-Selenomethionine)	200 mcg 364%
Copper (as Copper Sulfate)	2 mg 222%
Manganese (as Manganese Sulfate)	2 mg 67%
Chromium (as Chromium Chloride)	120 mcg 367%
Molybdenum (as Sodium Molybdate)	75 mcg 167%
Super Antioxidant Blend	28.96 mg
alpha-Lipoic Acid	25 mg
Lutein	2 mg
Lycopene	1 mg
Turmeric Root Extract (Curcuma longa)(20% Curcuminoids + 100 mcg)	500 mcg
Zeaxanthin (as Zeaxanthin Bomers)	400 mcg
Axanthin (from Haematococcus pluvialis)	50 mcg
beta-Cryptoxanthin	10 mcg
Performance Energy & Metabolism Blend	53.01 mg
Green Tea Leaf Extract (Camellia sinensis)(50% EGCG + 15 mg)	30 mg
Betaine (Trimethylglycine)(as Betaine Hydrochloride)	10 mg
Inositol	10 mg
Boron (as Sodium Borate)	2 mg
Grape Seed Extract (Vitis vinifera)(86% Polyphenols + 0.86 mg)	1 mg
Vanadium (as Sodium Metavanadate)	10 mcg

OTHER INGREDIENTS: Microcrystalline Cellulose, Hydroxypropyl Methylcellulose, Cellulose, Stearic Acid Vegetable Source, Hydroxypropylcellulose, Dicalcium Phosphate, Titanium Dioxide (Mineral Whitener), Magnesium Stearate Vegetable Source, Polyethylene Glycol, Talc, Natural Vanilla Mint Flavor, Chlorophyllin (Color), Stevia Leaf Extract.

CONTAINS: Soybeans and Fish (Anchovy, Mackerel, Sardine, Smelt, Salmon, Tuna, Cod or a Combination Thereof).

Distributed by:
GNC Holdings, LLC
Pittsburgh, PA 15222 USA
Contains a bioengineered food ingredient.

ACTUAL SIZE

Decaf Thermo Igniter 12X

Supplement Facts

Amount Per Serving	% Daily Value
Niacin	20 mg 125%
Garcinia cambogia Fruit Extract (50% Hydroxytricin Acid + 125 mg)	250 mg
Green Coffee Bean Extract (Coffea spp)(45% Chlorogenic Acids + 90 mg)	200 mg
EGCG (Epigallocatechin Gallate)(from Green Tea Leaf Extract)	50 mg
Capsimax® Capsicum Fruit Extract (Capsicum annuum)	33.34 mg
Piperine (Black Pepper Fruit Extract (Piper nigrum))	9 mg

OTHER INGREDIENTS: Microcrystalline Cellulose, Croscarmellose Sodium, Hydroxypropylcellulose, Stearic Acid Vegetable Source, Magnesium Stearate Vegetable Source, Silicon Dioxide, Titanium Dioxide (Mineral Whitener), Hydroxypropyl Methylcellulose, Vegetable Acetoglycerides, Carnauba Wax, Polyethylene Glycol, Polysorbate 80, Cellulose, Maltodextrin, Medium Chain Triglycerides, Polydextrose, Riboflavin (Color), Talc.

ACTUAL SIZE

CLA

Supplement Facts

Amount Per Serving	% Daily Value
Linololeic Acids	4%
Total Fat	5 g 10%
CLA (Conjugated Linoleic Acid)(from Safflower Oil)	4000 mg

OTHER INGREDIENTS: Gelatin, Glycerin.

WARNING: For adult use only. Do not use this product if you are pregnant or lactating. If you are taking medication or have a medical condition, consult a physician before using this product.

CLA is a naturally derived oil; you may notice minor color variation in softgels.

ACTUAL SIZE

Waterex™

Supplement Facts

Amount Per Serving	% Daily Value
Vitamin B-6 (as Pyridoxine Hydrochloride)	25 mg 1471%
Magnesium (as Magnesium Oxide)	25 mg 6%
Corn Silk Powder (Zea mays)	6.25 mg
Fennel Seed Powder (Foeniculum vulgare)	6.25 mg
Saltic Clove Powder (Allium sativum)	6.25 mg
Horseshall Bush Stems Powder (Equisetum arvense)	6.25 mg
Farsley Leaf Powder (Petroselinum crispum)	6.25 mg
Uva Ursi Leaves Extract 3:1 (Arctostaphylos uva ursi)	6.25 mg

OTHER INGREDIENTS: Microcrystalline Cellulose, Gelatin, Potassium Chloride, Magnesium Stearate Vegetable Source, Silicon Dioxide, Calcium Silicate, Maltodextrin, Cellulose, Sodium Lauryl Sulfate.

ACTUAL SIZE

Biotin 5000

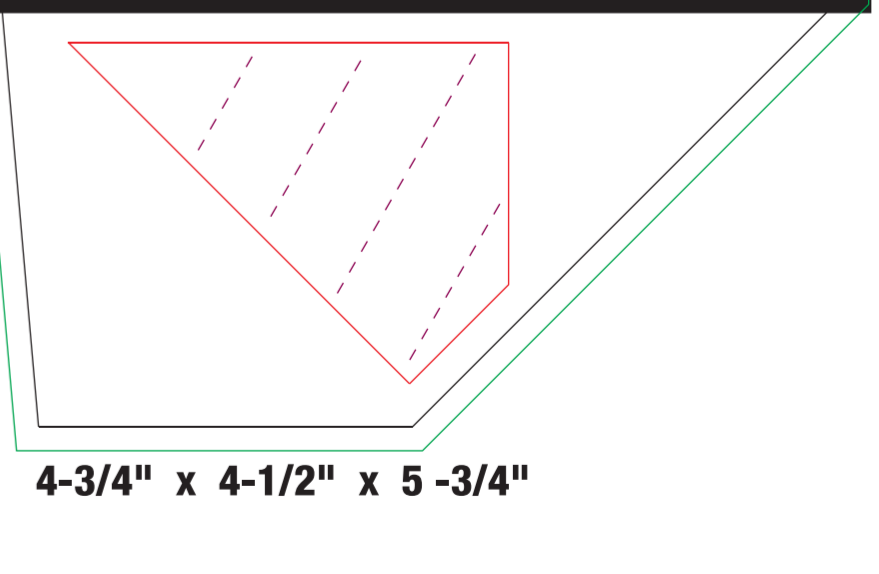
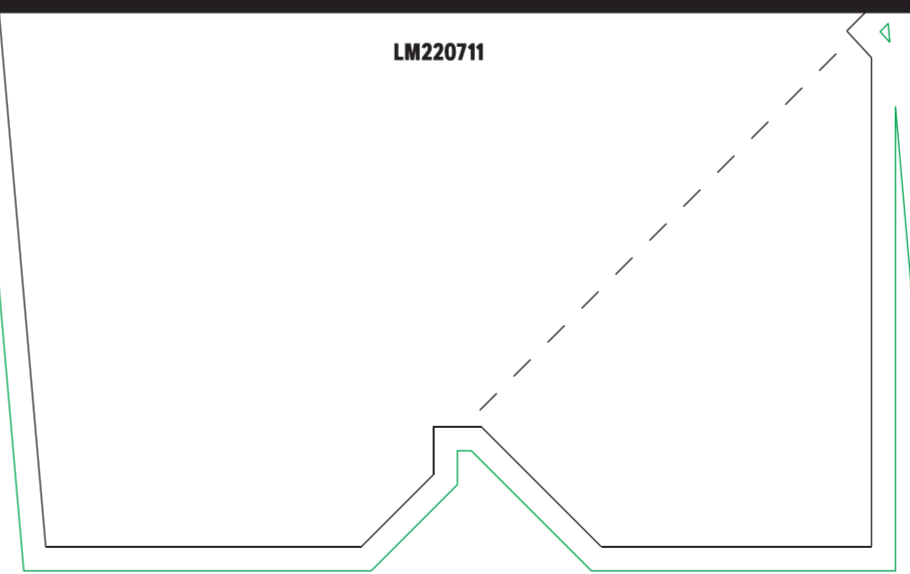
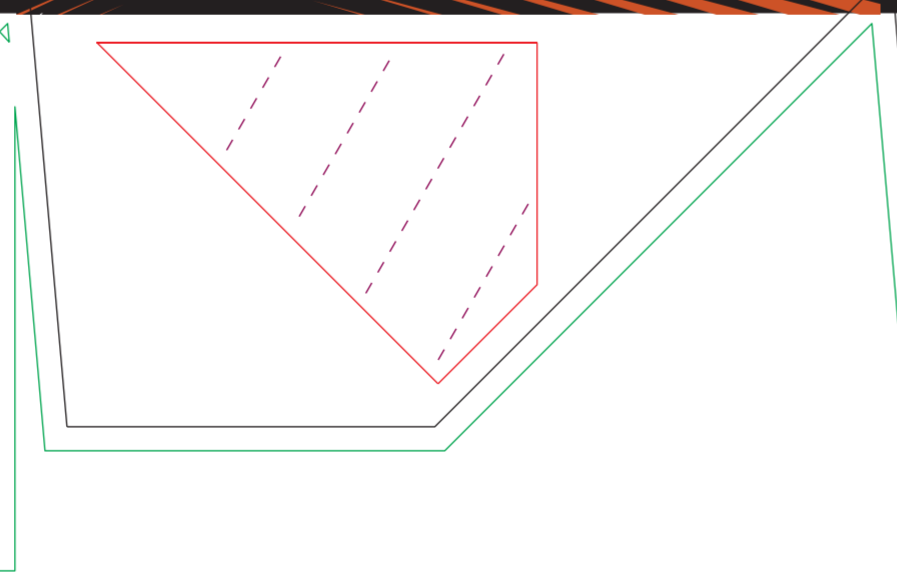
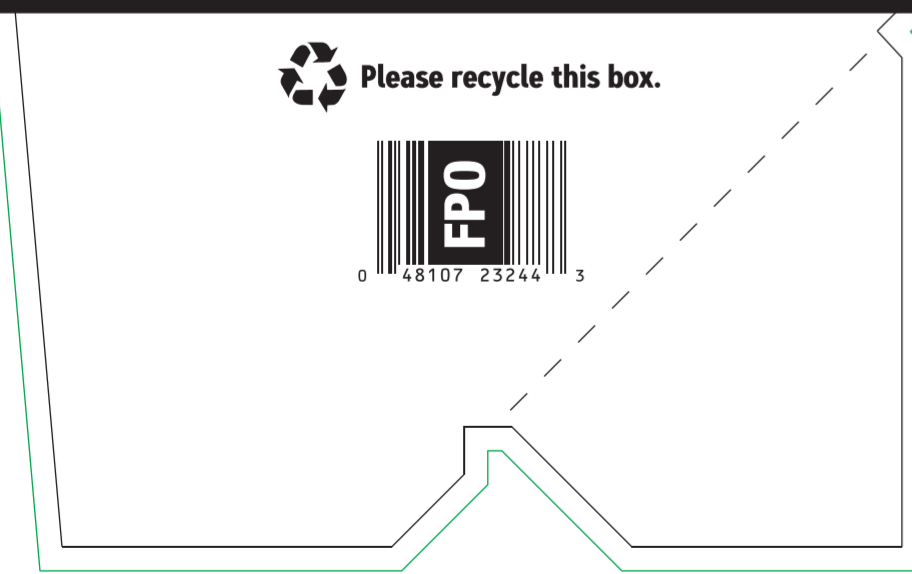
Supplement Facts

Amount Per Serving	% Daily Value
Biotin	5000 mcg 16667%
Calcium (as Dicalcium Phosphate)	110 mg 13%

OTHER INGREDIENTS: Gelatin, Microcrystalline Cellulose, Hydroxypropylcellulose, Talc, Calcium Silicate, Magnesium Stearate Vegetable Source.

ACTUAL SIZE

OUR QUALITY COMMITMENT TO YOU
Since 1935, our mission as the industry leader has been to provide you with the highest-quality nutritional supplements. We continue to stand behind this mission. If you're not 100% satisfied with your purchase, return the unused portion of the product with your receipt within 30 days and we'll either refund your money or find a replacement product that is right for you.



4-3/4" x 4-1/2" x 5-3/4"

GNC LIVE WELL

300 Sixth Avenue #2
Pittsburgh, PA 15222

Round: RELEASE - AP

Revise Date: 1/7/22

File name: 215212_JWG_Womens RippedNonStimVP_Carton.eps

Application: Adobe Illustrator CC

Artwork is set up at 100%

Color Palette
4 c/p, 5 spot, Cold Foil, Varnish

Line Art Black	Black	Yellow
PMS 2028	Cyan	Magenta
Cool Gray 4	MET 10153	Cold Foil
Opaque White	Matte Varnish	KO Silver

Contact: Heather Cass at GNC, 412.338.2577 or Email: heather-cass@gnc-hq.com

Supplier is responsible for checking files for accuracy in:

- measurements
- print tolerance requirements
- registration
- construction of artwork

Changes made to suit production requirements must be approved by GNC.

Proofs and copy changes must be sent to GNCpackaging@gnc-hq.com for review.

COLORS ARE COMPUTER SIMULATED AND ARE NOT FOR COLOR MATCHING. Varnishes/Coatings may not be included in color palette specifications. Refer to print specifications.

Printers Note: PDP and top panel print silver cold foil as spec'd in "cold foil layer". Logo and product name knock out as "KO Silver".

Cold foil, white layer and dull varnish layer are spec'd in the art layers.